



# HIGH BAY

## Fluorescent Lighting Solutions



*"Your Number One Source for  
Energy Efficient Lighting"*



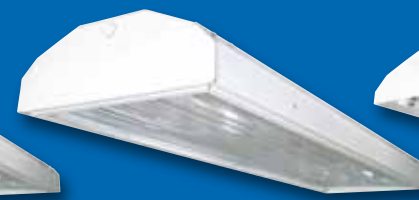
## HIMALAYAN 2

## HIMALAYAN NARROW

## HIMALAYAN RECESSED

## HIMALAYAN CLD

## HIMALAYAN 3



**Premium  
High Bay**

**Aisle Lighter  
High Bay**

**Latched Lens  
Door Frame**

**Double Gasket  
Cold Storage**

**Reduced Profile  
High Bay**

*The most configurable  
and complete  
high bay available*

*Eliminates wasted light  
that goes over the top  
of tall racks*

*Recessed door frame  
lens, improves access  
and maintainability*

*Optimize light output in  
cold weather and  
freezer applications*

*Low profile designed to  
minimize size without  
sacrificing quality*

OPTIONS	HIMALAYAN	HIMALAYAN NARROW	HIMALAYAN RECESSED	HIMALAYAN CLD	HIMALAYAN 3
BODY	Steel or Aluminum	Steel or Aluminum	Steel or Aluminum	Steel or Aluminum	Aluminum
LAMPS	2 - 10	2 - 6	2 - 8	2 - 8	3 - 10
LENS	Kit (opt)	Kit (opt)	Standard	Standard	NA
WIRE CAGE	Optional	Optional	Optional	Optional	Optional
SENSOR	Optional	Optional	Optional	Optional	Optional
REFLECTORS	E, W	EN	E, EN, W	E, EN, W	ES, WS

E = 95% Enhanced, EN = 95% Enhanced Narrow, ES = 95% Enhanced Shallow, W = 91% White, WS = 91% White Shallow. See Reflector Chart on Back.

*Designed to optimize lamp  
performance to deliver  
unsurpassed light quality  
in high bay applications.*

*Developed to focus the  
light in a narrow rectangular  
pattern for rack aisles in  
distribution centers.*

*The door frame latches by  
two cam latches similar  
to a 2x4 recessed fixture.*

*Double gasket lens that  
firmly holds the lens in place.  
No vents help trap heat to  
optimize lamp performance  
in cold environments.*

*Aluminum construction with  
vented center ballast channel  
for excellent heat dissipation  
and rigidity.*

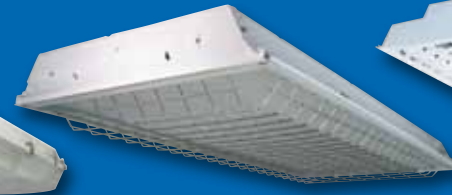
# HIMALAYAN 8 FOOT

# I-BAY

# BLIZZARD

# GRID HIGH BAY

# FLUID



## 8 Foot Tandem High Bay

## Open Frame High Bay

## Wet/Cold Storage High Bay

## Grid Ceiling High Bay

## Retail/Super Center High Bay

*Replace 1000W Metal Halide or HPS with a single fixture*

*Our most versatile high bay fixture yet, perfect for a wide range of lighting applications*

*Sealed high bay perfect for food manufacturing, hose down, and dirty environments*

*Used when high lumen output fluorescent is needed for T-grid ceilings*

*High out put fixture perfect for commercial and retail applications*

HIMALAYAN 8	I-BAY	BLIZZARD	GRID HIGH BAY	FLUID
Steel or Aluminum	Aluminum	Reinforced Glass Fiber	Steel	Steel
4 - 16	4 - 8	3 - 6	2 - 6	1 - 4 (8ft ver. avail.)
Door Frame (opt)*	NA	Standard	Optional	NA
Optional	Optional	NA	Optional (2x4 only)	NA
Optional	Optional	Optional	NA	Optional
E, EN, ES, W, WS	E, EN, ES, W, WS	E (4 lamp), ES (6 lamp), W, WS	95% Enhanced or White	95% Enhanced or White

\*Call factory for lens option details

*Constructed from a single 8 foot blank, these fixtures are both rigid and easy to install.*

*The I-Bay features multiple lamp and reflector options, providing a wide range of light levels and distributions.*

*NSF and NEMA 4x ratings, easily passes a 1500 PSI hose down test.*

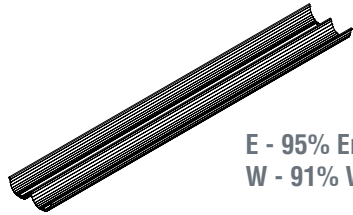
*This fixture mounts just like a standard 2x4 recessed fixture, ideal for multipurpose rooms and gymnasiums.*

*Features a white louvered baffle that gives the fixture an attractive appearance. Uplight achieved without a reflector.*

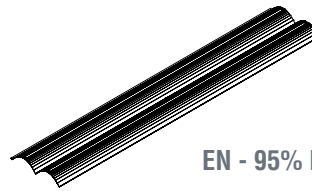
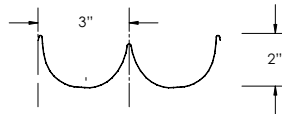


## IT ALL STARTS WITH THE REFLECTORS

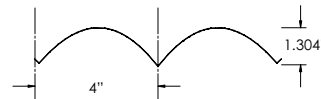
One of the most important components of any high bay lighting fixture is the reflectors. With five main reflector configurations (illustrated below), ILP has the right reflector to help you achieve your ideal light distribution.



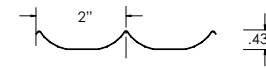
**E - 95% Enhanced Reflector**  
**W - 91% White Reflector**



**EN - 95% Enhanced Narrow**



**ES - 95% Enhanced Shallow**  
**WS - 91% White Shallow**



“Your Number One Source for Energy Efficient Lighting”

INDUSTRIAL LIGHTING PRODUCTS

ph: 407-478-3759 fax: 407-478-3760  
519 Codisco Way, Sanford, FL 32771

[www.ilp-inc.com](http://www.ilp-inc.com)



ARRA Compliant