



Controls Made Easy

Ideal solution for dramatically improving energy savings in commercial, educational, retail, and office environments with all the controls in the palm of your hand. The combination occupancy and daylight harvesting sensor is controlled via cell phone App enabling the user to easily create groups, setup zones, adjust maximum light output, hold time after motion detection, background light levels, prolonged time at background light levels, fade time between occupied and background light levels, and adjust ECO light levels. There is no commission, annual maintenance plan purchases, or scheduled technician visits required. Simply order the desired fixture with this feature pre-installed, download the App, and start taking control of your lighting environment today!

Features / Benefits

- Compact Occupancy / Daylight Harvesting In One Device
- Create Groups & Setup Zones
- Enabled App Allows You Complete Control Over:
 - Turning On / Off Occupancy And / Or Daylight Functions
 - Setting Maximum Lumen Output (100% - 5%)
 - Eco On Level (100% - 5%)
 - Hold Time Once Motion Is Detected (1 - 120 minutes)
 - Background Light Level When Space Is Unoccupied (100% - 5%)
 - Length Of Time Dimming From On To Background (0 - 25 Sec.)
 - Prolong Amount Of Time Background Level Lasts. (0 - ∞ minutes)
- Time To On / Off Light Levels At 0.7 Seconds
- Easily Controlled Via IR Enabled Android Smart Phone / Tablet
- Saved Program Profiles Allows For Easy Commissioning Of Multiple Zones
- Control Up To (4) Fixtures Per One Control
- Complies With Title 20 And Title 24 Requirements

Available In These Fixtures:

- FF
- FLT
- FLTR
- FWS
- FZ
- LANCE
- RZ
- SQ
- VOLA

Part Numbers:

ES:

Sensor with sensor ready driver factory installed.

SR:

Sensor Ready Driver installed without sensor for grouping units together. Max units tied to 1 ES unit = 4

ES/PCD:

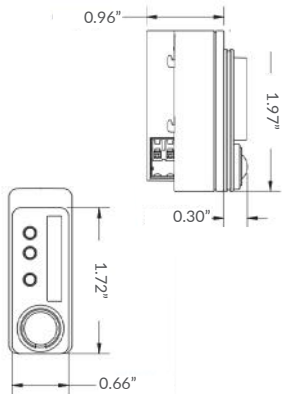
Pre-installed App on control device for commissioning. (1) per install needed, unless you have NFC Android enabled phone/tablet.

ES/WWS:

Wireless & Batteryless Dual Reader Wall Switch

Product Specifications

Dimensions



EasySense Overview

Specifications:

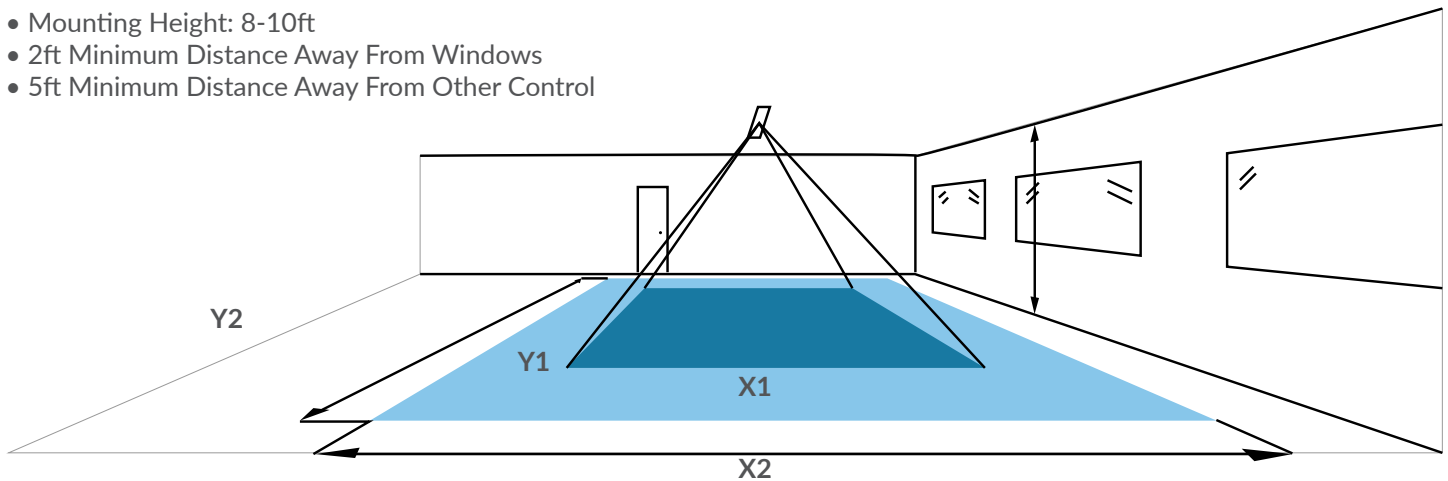


LED Indicator Lights



Installation Recommendations:

- Mounting Height: 8-10ft
- 2ft Minimum Distance Away From Windows
- 5ft Minimum Distance Away From Other Control

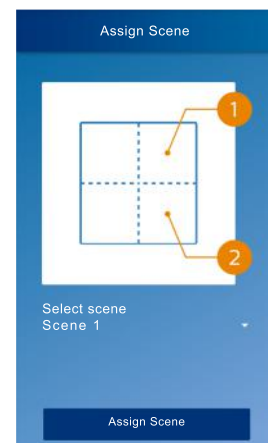
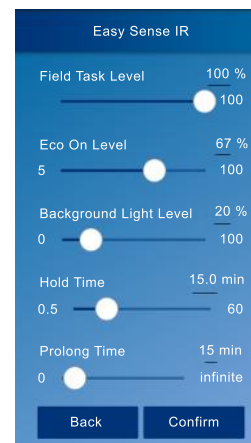


When installed in a typical office ceiling H, the sensor is sensitive to minor movements within X1 by Y1 area. It will cover minor movements down to a few centimeters at the task area of a desk and is sensitive to major movements within a range of X2 by Y2.

EasySense App Configuration

Program Steps

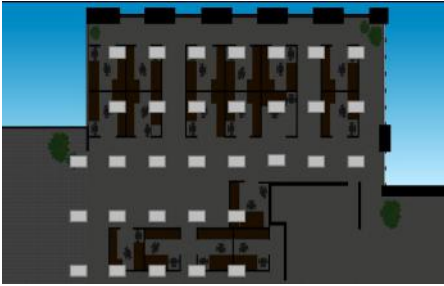
1. Create Group
2. Select Fixtures To Add
3. Add Wireless Wall Switch
4. Close Group
5. Configure Group Performance
6. Create Special Scenes For Wall Switch
7. Program Group
8. Relax & Enjoy



How It Works

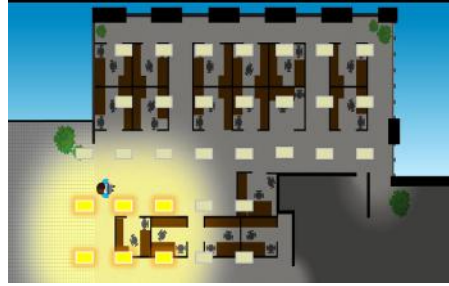
Grouping

1



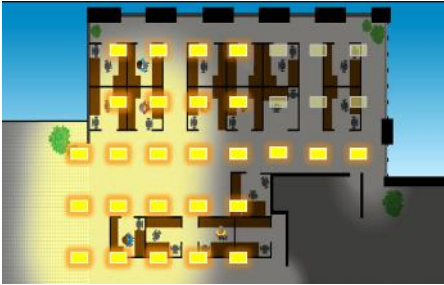
An open office Application.

2



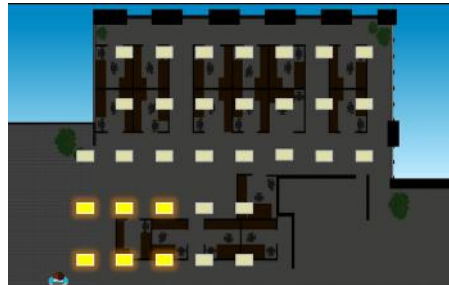
As people enter, lighting in their area brightens to "task level." While other fixtures in the group dim up to "background level."

3



As people begin leaving for the day, additional lights dim down.

4



After the last worker leaves, lights turn off after the configured "prolong time."

Wireless Wall Switch (ES/WWS)

1



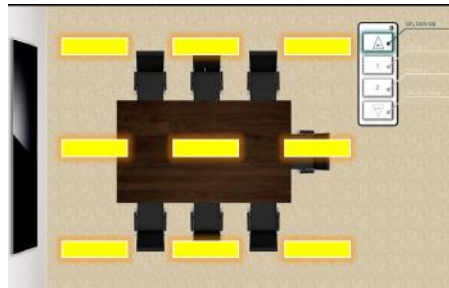
Specifications

- Wireless
- Batteryless
- Dual Rocker
- Zig Bee®
- 30 - 100ft Range

Functions

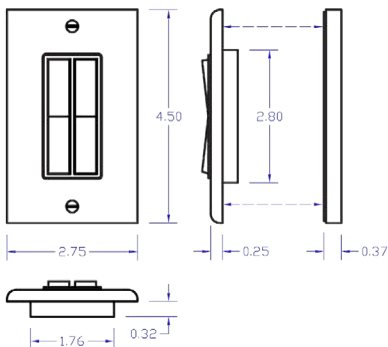
1. On (Hold To Brighten Up)
2. Off (Hold To Dim Down)
3. Scene 1
4. Scene 2

2

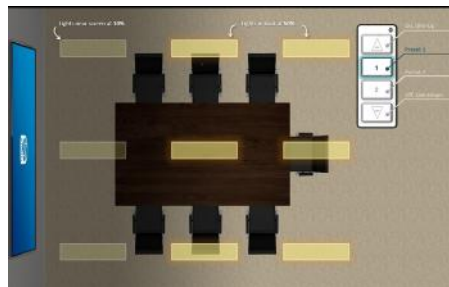


Pressing "ON" brings lights to "task level".

3



4



Pressing Scene 1 or Scene 2 takes lighting to pre-defined light level set.