

Warning:

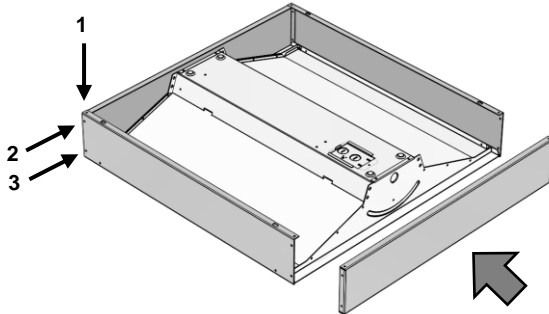
- Risk of Electric Shock. This product must be installed in accordance with the applicable installation code by a person familiar with the construction and operation of the product and the hazards involved
- Make sure all electrical power is turned off while installing the fixture.
- This luminaire must be adequately grounded for protection against shock hazards and to assure proper operation.
- Disconnect power before servicing.
- LEDs are ESD (Electro Static Discharge) sensitive devices that can be easily damaged if the proper ESD mitigating steps are not taken.
- LEDs are very sensitive to mechanical damage. Caution must be taken to avoid damage to the LEDs.

Surface Mount Enclosure Assembly:

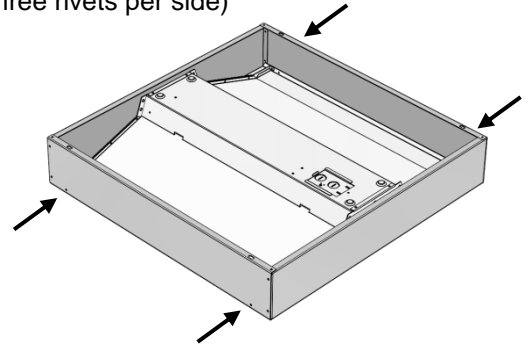
Note:

This section is to be used with the VOLA Surface Mount Kit when ordered separately from the VOLA luminaire. If the luminaire was ordered with the enclosure pre-installed from the factory, skip to the next section for mounting instructions.

STEP 1: Assemble panels around the luminaire using three of the provided rivets at each of the four corners as shown below, enclosing the VOLA troffer fixture within.



STEP 2: Attach the Surface Mount Kit side panels to the VOLA luminaire using rivets in the locations shown. (2x2: Two rivets per side, 1x4 or 2x4: Three rivets per side)



Luminaire Surface Mounting Instructions:

Note:

Hardware used for mounting the luminaire is not supplied. Hardware must properly and safely secure luminaire to ceiling and ceiling structure, must be installed by a qualified professional, and must meet local codes. Fixture may be suspension mounted utilizing proper suspension cable and hardware (not included).

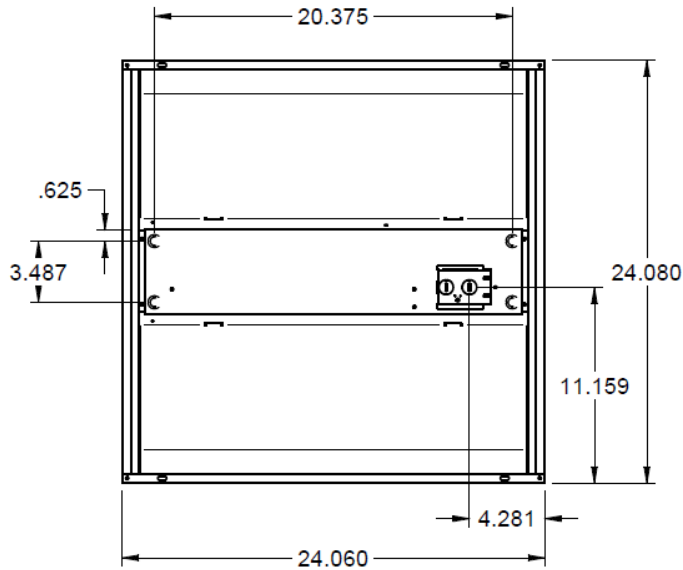
STEP 1: Remove the lens and LED tray from the VOLA luminaire to access the driver compartment. Drill holes for mounting hardware in the raised dimples at the corners of the driver compartment. Use a hole size specified by the hardware manufacturer.

STEP 2: Remove the access plate from the rear of the driver compartment. Hold the VOLA near the mounting location and make wiring connections according to state and federal regulations.

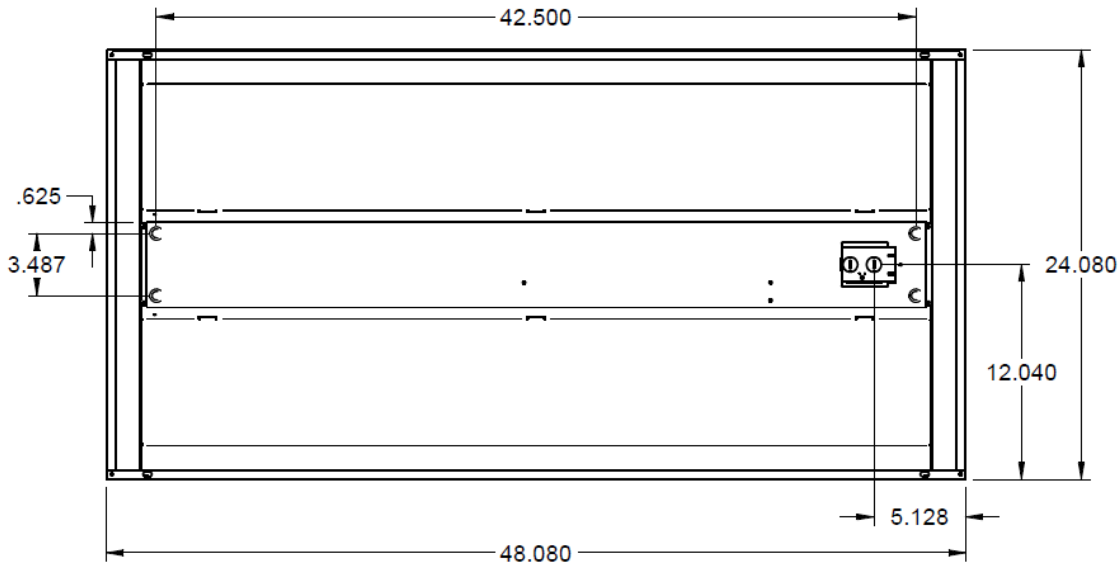
STEP 3: Position the VOLA in the desired mounting location. Use a cordless drill or screwdriver to secure the luminaire to the ceiling surface using the appropriate mounting hardware.

Luminaire and Mounting Location Dimensions:

VOLA22:



VOLA24:



VOLA14:

