

# VOL LED TROFFER

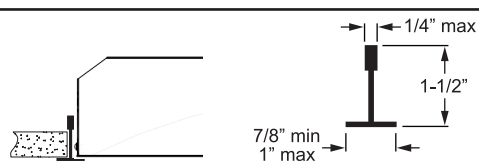
## INSTALLATION INSTRUCTIONS

### Warning:

- Caution - Risk of Shock. This product must be installed in accordance with the applicable installation code by a person familiar with the construction and operation of the product and the hazards involved.
- Make sure all electrical power is turned off while installing the fixture.
- This luminaire must be adequately grounded for protection against shock hazards and to assure proper operation.
- Disconnect power before servicing.
- Always use correct lamp type and wattages.
- LEDs are ESD (Electro Static Discharge) sensitive devices that can be easily damaged if the proper ESD mitigating steps are not taken.
- LEDs are very sensitive to mechanical damage. Caution must be taken to avoid damage to the LEDs.
- ESD or mechanical damage voids all warranties.

### NEMA "G" (Grid) fixture

The VOL LED troffer fixture is designed to fit securely into a standard NEMA Type "G", 1" nominal T-bar system. Consult the factory for use with other grid systems.



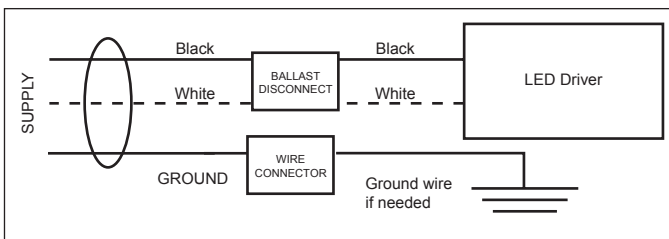
**STEP 1:** Follow the steps below to install the fixture(s) into a NEMA Type "G" ceiling system:

- Raise the fixture through the ceiling opening and rest the fixture in the grid system.
- Center the fixture within the opening.
- (Optional or as required by local building code) Use safety cables (not included) and earthquake clips to secure the fixture to the ceiling structure for added stability. See Page 2 for details.
- Refer to local codes for other installation requirements.

**STEP 2:** Once the fixture is installed into the ceiling system, follow the steps below to complete necessary electrical connections:

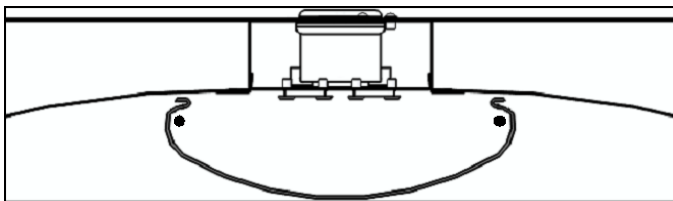
- Remove access plate on the back of the fixture.
- Remove ballast supply wires from access plate.
- Make wire connections in accordance with local codes. A ground wire or screw location is provided depending on the fixture model.
- Re-install access plate.

**STEP 3:** Attach power supply and ground wires using UL listed wire connectors.



Please consult factory for other driver configurations or emergency driver wiring diagrams.

**STEP 4:** Ensure that the lens is fully and securely mounted onto the attachment pins so that it cannot come loose unless force is applied.



---

## Earthquake clips and safety cable installation instructions:

Figure 1

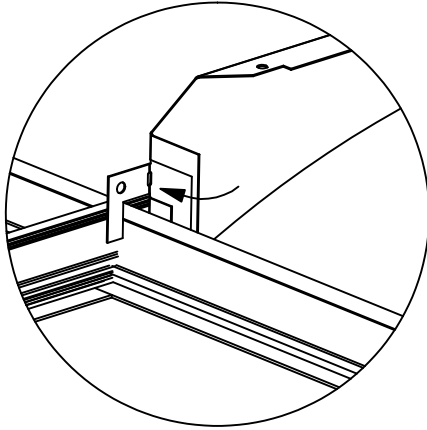


Figure 2

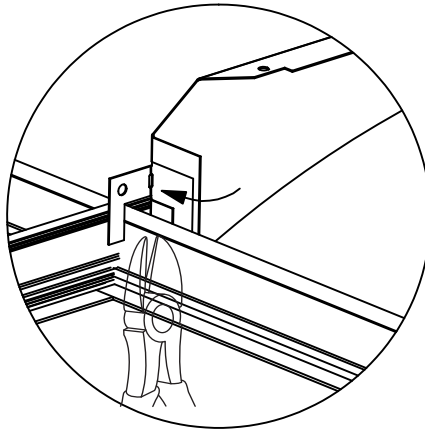


Figure 3

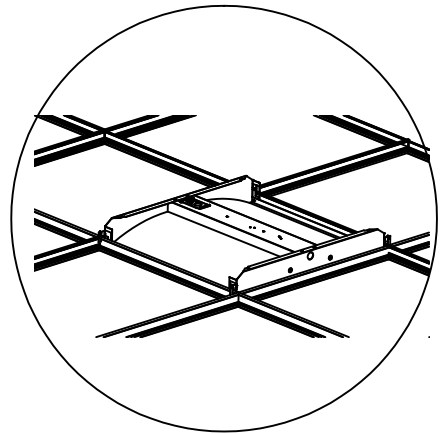


Figure 4

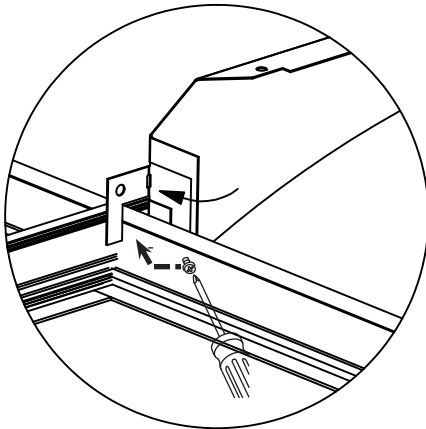


Figure 5

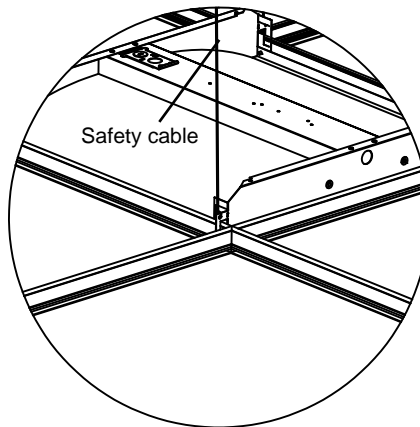
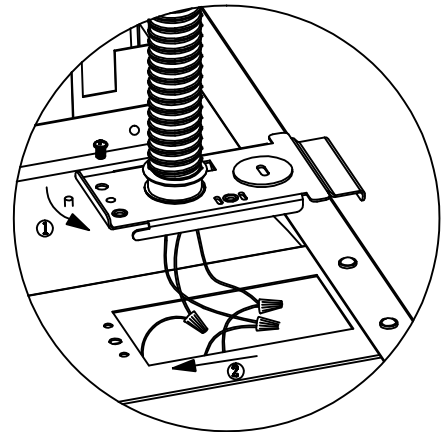


Figure 6



### Installation Steps:

Figure 1: Bend out mounting tab 90 degrees on each corner.

Figure 2: Use side cutters to adjust each tab to height of T-grid.

Figure 3: Lay fixture into T-grid.

Figure 4: Bend tabs flush against T-grid in order to clear corner for ceiling tile.

Figure 5: Use a #8x1/4" sheet metal screw to fasten fixture to T-grid and use a hanger wire to tie off appropriately in accordance with local building codes(screws and hanger wires supplied by others).

Figure 6: Ensure that the wiring of the last fixture in the row is properly terminated. Then make all electrical connections to the fixture. Attach the wiring access cover plate.