



# CONVERTAFLOOD REFLECTOR INSTALLATION INSTRUCTIONS

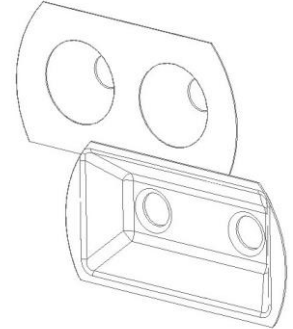
## MODELS:

**CFS-36W-U-XX**

**CFM-52W-U-XX or CFM-85W-U-XX**

**CFL-110W-U-XX or CFL-150W-U-XX**

(Note: Replace XX with 40 or 50 based on CCT of LED, may be followed by BLK, BRZ, or WHT)



## Part Number List:

MODEL	REFLECTOR PART NUMBERS			
	NEMA 3X3	NEMA 4X4	NEMA 5X5	NEMA 7x6
CFS-36W	-	N44/S	N55/S	N76/S
CFM-52W	N33/M52	N44/M52	N55/M	N76/M
CFM-85W	-	N44/M85	N55/M	N76/M
CFL-110W or CFL-150W	N33/L	N44/L	N55/L	N76/L

(Note: The NEMA 7x6 reflector comes Standard on the Convertaflood. Replacements are available.)

## 1. Introduction

- The CF Family LED Floods use easy replaceable snap-in type reflectors to customize to your lighting needs.

### **Warning:**

To avoid the risk of fire, explosion, or electric shock, this product shall be installed, inspected, and maintained by a qualified electrician, in accordance with all applicable electrical codes.

### **Warning:**

To avoid electric shock:

- Allow product to cool before servicing.
- Be certain electrical power is OFF before and during installation or maintenance.
- Luminaire must be connected to a wiring system with equipment-grounding conductor.

### **Warning:**

To avoid LED damage:

- Please do not touch the LED when replacing the reflector. Touching the LED may result in damage or failure of the LED.

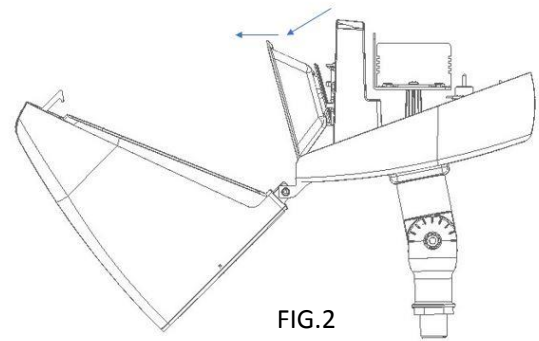
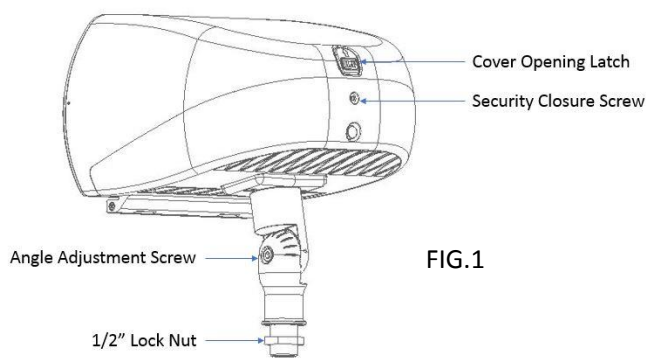
**ILP – Industrial Lighting Products, LLC**

519 Codisco Way, Sanford, FL 32771

Phone: (407) 478 3759 Fax: (407) 478 3760

www.ilp-inc.com

## 2. Installation



### Step 1

Open the back cover by using the provided tool to loosen the security closure screw, hold and compress fixture lightly while depressing the cover opening latch. (FIG.1)

### Step 2

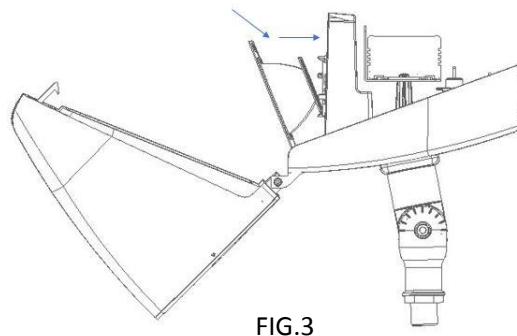
Remove existing reflector by tilting the reflector forward until the tabs release then slightly pull outward to remove the reflector. (FIG.2)

### Step 3

Replace reflector by tilting the reflector forward and dropping into the bottom tabs. slightly push forward till the reflector snaps in the remaining tabs. (FIG.3)

### Step 4

Close the back cover and tighten the security closure screw using the provided tool to approx. 10 ft lbs.



### After installation, please

- Ensure the lighting fixture is firmly secure to its mount.
- Ensure wires are connected correctly before applying power.

To complete installation, turn power ON, check for proper operation of luminaire.

**ILP – Industrial Lighting Products, LLC**

519 Codisco Way, Sanford, FL 32771  
Phone: (407) 478 3759 Fax: (407) 478 3760  
www.ilp-inc.com