

Project Name:

Part Number:

Type:

ENDEAVOUR

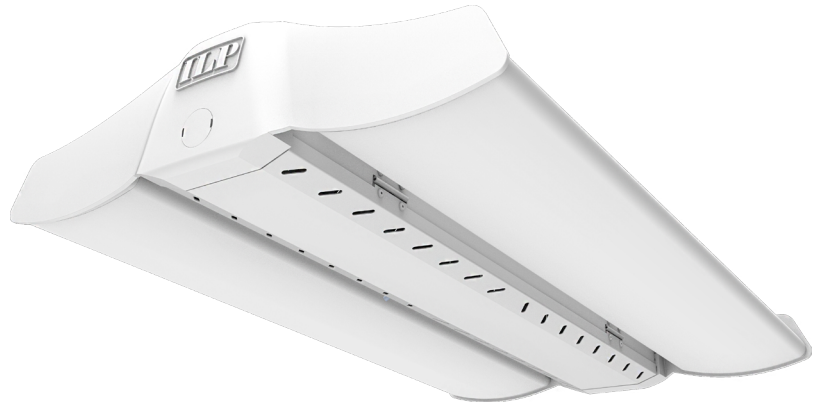
LINEAR HIGH BAY



407-478-3759
www.ilp-inc.com

FEATURES

- Sleek Curved Polycarbonate Injection Molded End Caps
- Aluminum Body with steel channel for added rigidity
- Toolless Hinged Driver Access
- Wide & Narrow Distributions
- Impact Resistant and IP5X Rated Lens Options:
 - Frosted Acrylic (FRL)
 - Frosted Polycarbonate (PFL)
- V-Clips for dual point chain or cable hanging (std.)
- Advanced and Basic Controls Options
- -40°F - 122°F Ambient Temperature Range
- 3000K - 5000K CCT
- Uplight Options
- >80 Color Rendering Index (CRI)
- Calculated L70 >100,000 Hours
- 0-10V Dimmable Driver (100%-10%)
- 120-277V Universal Voltage
- 5 Year Warranty
- ETL Listed for Damp Location
- DesignLights Consortium® Premium Qualified Luminaire



Shown with Frosted Lens (FRL)



enlighted

legrand



SUITABLE APPLICATIONS

- Gymnasiums
- Manufacturing Plants
- Warehouses
- Distribution Centers

ORDERING GUIDE:

SERIES	LUMENS	DRIVER	COLOR	LENS OPTIONS	DISTRIBUTION	UPLIGHT
EDV Endeavour	8L	U 120-277V	50	BLANK	No Lens	BLANK No Uplight
	12L		40	FRL	Frosted Acrylic Lens	UP/2L ² 2000lm Uplight
	15L		35	PFL ^{1,9}	Frosted Polycarbonate Lens	UP/4L ³ 4000lm Uplight
	18L		30			
	24L					
	30L					
	36L					
	48L					
	60L					

OPTIONS

Factory Installed

CORDx	Cord (x = ft)
CORD/XFT/L7-15P	Cord (x=ft) with 277V 15amp Plug
QDCx	Quick Disconnect Cord (x = ft)
GTD	Factory Installed Generator Transfer Device
FI/ILBCP05	5W LED Factory Installed Battery Backup
FI/ILBCP07	7W LED Factory Installed Battery Backup
FI/ILBCP10	10W LED Factory Installed Battery Backup
FI/ILBCP12	12W LED Factory Installed Battery Backup
FI/ILBCP20 ^{4,5}	20W LED Factory Installed Battery Backup
SD480 ¹	480V Step Down Transformer
SD347 ¹	347V Step Down Transformer

Ship With Accessories

WC ¹	11 GA Wire Cage
FMB	Fixture Mounting Box
HUB3/4	Conduit Hub 3/4" for pendant mount
HOOK	Cast Iron Hook for single point mounting
HB-XX-18Y-PAD	Y-Toggle Cable System (xx = in)
SMZBKIT	Surface Mount Bracket
ES/PCD ⁷	EasySense Pre-Programmed Control Device
ES/IR ⁸	EasySense Commissioning IR Blaster
ES/WWS/DR	EasySense Dual Rocker Wireless Wall Switch
FSIR-100 ⁷	Programming tool for FSP-211 Sensor

CONTROLS OPTIONS

Basic

FIOS	On/Off Occupancy Sensor
FIOSPC	On/Off Occupancy Sensor w/ Photocell
FIOSPC/DLH	On/Off Occupancy Sensor w/ Daylight Harvesting
DHPC	Daylight Harvesting
USBD	User Bi-Level Dim Sensor w/ Occ. Sensor
BDxx	Preset Bi-Level Dim Sensor (xx=%eg.20,30)
BDxxPC	Preset Bi-level Dim Sensor w/ Photocell

Advanced

ES/HB ⁶	EasySense High Bay Sensor
FSP-211/L2 ¹⁰	Legrand FSP-211 Sensor for 8' Mounting Height
FSP-211/L3 ¹⁰	Legrand FSP-211 Sensor for 20' Mounting Height
FSP-211/L7 ¹⁰	Legrand FSP-211 Sensor for 40' Mounting Height
FSP-311/L2	Legrand FSP-311 Bluetooth Programming Sensor for 8' Mounting Height
FSP-311/L3	Legrand FSP-311 Bluetooth Programming Sensor for 20' Mounting Height
FSP-311/L7	Legrand FSP-311 Bluetooth Programming Sensor for 40' Mounting Height
5S/CU/IL	Enlighted 5E Individual Lighting (IL) Sensor with Control Unit
5S/CU/CL	Enlighted 5E Connected Lighting (CL) Sensor with Control Unit
5S/CU/IOT	Enlighted 5E Internet of Things (IOT) Sensor with Control Unit

¹ Does not qualify for DLC² Available for EDV-8L - 24L only³ Available for EDV-30L - 60L only⁴ Cannot be used with FMB, HUB, or HOOK⁵ Mounted externally to fixture⁶ Must be used with ES/PCD and ES/IR options for commissioning⁷ One needed per project⁸ Must be used with ES/PCD⁹ Contact factory for availability¹⁰ Must be used with FSIR for commissioning¹¹ Only available with FRL



QUICK SHIP ITEMS:

SERIES		LUMENS	DRIVER	COLOR	PRIMARY LENS	
EDV	Endeavour	12L	U 120-277V	50	FRL*	Frosted Acrylic Lens
		18L		40		
		24L				

* Stocked products only available with Frosted Lens (FRL)

LED SYSTEMS INFO

NO LENS	LUMENS	WATTS	EFFICACY	REPLACES
EDV-8L-U-50	8,433 lm	51 W	166 lm/W	100W MH, 4T8
EDV-12L-U-50	12,570 lm	82 W	153 lm/W	175W MH, 2T5HO
EDV-15L-U-50	16,490 lm	105 W	158 lm/W	200W MH, 6T8
EDV-18L-U-50	20,180 lm	131 W	154 lm/W	250W MH, 4T5HO
EDV-24L-U-50	24,950 lm	164 W	152 lm/W	400W MH, 6T5HO
EDV-30L-U-50	32,170 lm	206 W	156 lm/W	575W MH, 10T8
EDV-36L-U-50	36,334 lm	245 W	148 lm/W	750W MH, 8T5HO
EDV-48L-U-50	48,445 lm	327 W	148 lm/W	1000W MH, 10T5HO
EDV-60L-U-50	64,340 lm	413 W	156 lm/W	1000W MH, 12T5HO

LED System data above was tested at 277V on EDV-8L-U-50, EDV-12L-U-50, EDV-15L-U-50, EDV-18L-U-50, EDV-24L-U-50, EDV-30L-U-50, EDV-36L-U-50, EDV-48L-U-50, & EDV-60L-U-50.

FROSTED LENS	LUMENS	WATTS	EFFICACY	REPLACES
EDV-8L-U-50-FRL	8,034 lm	51 W	158 lm/W	100W MH, 4T8
EDV-12L-U-50-FRL	12,240 lm	83 W	148 lm/W	175W MH, 2T5HO
EDV-15L-U-50-FRL	15,430 lm	104 W	148 lm/W	200W MH, 6T8
EDV-18L-U-50-FRL	18,960 lm	132 W	144 lm/W	250W MH, 4T5HO
EDV-24L-U-50-FRL	23,600 lm	163 W	145 lm/W	400W MH, 6T5HO
EDV-30L-U-50-FRL	29,770 lm	205W	145 lm/W	575W MH, 10T8
EDV-36L-U-50-FRL	34,613 lm	245 W	141 lm/W	750W MH, 8T5HO
EDV-48L-U-50-FRL	46,151 lm	327 W	141 lm/W	1000W MH, 10T5HO
EDV-60L-U-50-FRL	61,070 lm	411 W	149 lm/W	1000W MH, 12T5HO

LED System data above was tested at 277V on EDV-8L-U-50-FRL, EDV-12L-U-50-FRL, EDV-15L-U-50-FRL, EDV-18L-U-50-FRL, EDV-24L-U-50-FRL, EDV-30L-U-50-FRL, EDV-36L-U-50-FRL, EDV-48L-U-50-FRL & EDV-60L-U-50-FRL

Lumen Output CCT Multiplier	
CCT	Conversion Multiplier
3000K	0.92
3500K	0.94
4000K	0.96

To Calculate:
 Lumen output in 5000K x CCT Conversion Multiplier = Lumen Output in Alternate CCT's

SPECIFICATIONS

CONSTRUCTION

Aluminum body with steel driver channel for maximum rigidity and thermal properties. Sleek curved polycarbonate injection molded end caps provide a modern finish while adding rigidity and durability. Toolless hinged driver door access for ease of maintenance and installation. Power access plate mounted on back of center driver channel for easy access to wiring. Product proudly assembled in the United States of America.

ELECTRICAL

Class 2 LED light engine for high efficacy and long life. Calculated L70 > 100,000 hrs. LED Lumen Maintenance Estimates based on TM-21 projections for the light source at 25°C ambient. Power Factor > 0.90. Standard 120-277 Vac 0-10V dimmable (10%-100%) with optional 347-480 Vac step down transformer. Optional emergency battery backups and generator transfer device available to meet critical life safety lighting requirements. Fixture reduced maximum ambient for emergency battery backup and step down options.

MOUNTING

Options include suspension chain, aircraft cables, hook, single pendant (HUB), surface mount (SMZBKIT). Reduced maximum ambient range for surface mount.

WARRANTY

5 Year Warranty (Terms and Conditions apply)

OPTICS

Standard without lens. Optional frosted acrylic (FRL) and frosted polycarbonate (PFL) lenses available for added LED protection and glare reduction. Optics are IP5X rated; protected against dust. Wide (std.) & Narrow (ND) Distribution options available for all lumen packages, ND option only available with frosted acrylic (FRL) lens.

THERMAL

Ambient temperature range -40°F to 122°F (-40°C to 50°C). Fixture to be mounted at a minimum plenum height of 18" to maintain maximum ambient temperature. Reduced maximum ambient for surface mounting.

CONTROLS

Factory installed Advanced and Basic integral occupancy sensor options available. All Basic sensors are end mounted. Advanced EasySense sensor is end mounted. All other Advanced sensors are center driver cover mounted. Inquire with manufacturer for additional controls options, including customer supplied items.

CERTIFICATIONS

ETL listed to US and Canadian safety standards. Suitable for damp locations. American Recovery and Reinvestment Act Funding Compliant. DLC (DesignLights Consortium) Premium Qualified, with some Standard Qualified configurations. Please refer to the DLC Qualified Products List at www.designlights.org/QPL to confirm specific product qualifications.

CONTROLS OPTIONS

BASIC

FIOS

Standard on/off motion sensor. Comes with 360 degree high bay lens, 360 degree low bay lens & aisle lens. 360 degree high bay lens factory installed, unless notified otherwise.

FIOSPC

Motion sensor with the addition of photocell control. When installed, fixture will not activate unless 1. motion is detected and 2. light levels are below the preset level. When activated, fixture will turn on to 100% light output & will only shut off when one of the two levels mentioned above are met. If no motion is detected & light levels fall below preset level the fixture remains off.

FIOSPC/DLH

Factory installed motion sensor with the addition of photocell control that will allow for daylight harvesting. When installed, fixture will not activate unless 1. motion is detected & 2. light levels are below the preset level. When activated, fixture will turn on only enough to meet the preset light levels and will adjust as the amount of light in the space adjusts between 100%-10%. If light levels are adequate the fixture will remain off.

DHPC

Daylight Harvesting off photocell. Fixtures will continually dim up/down throughout the day based on light level readings taken from the photocell control.

USBD

User Selectable Bi-Level Dimming. Allows the end user to manually select the unoccupied dimming level. Once motion is detected, the fixture will return to 100% light output.

BDxx

Factory set Bi-Level Dimming. Sensor is set to dim level, as indicated in the "xx" portion of the part number, when the area is unoccupied. Example: BD20 sets the fixture to dim down to 20% lumen output when the area is unoccupied. Once motion is detected, the fixture will return to 100% light output.

BDxxPC

Factory set Bi-Level Dimming with motion and photocell. Sensor is set to dim level, as indicated in the "xx" portion of the part number, when the area is unoccupied and will not return to 100% light output unless 1. motion is detected and 2. the light level is below the preset level. Example: BD20PC sets the fixture to dim down to 20% lumen output when the area is unoccupied and will not return to 100% light output unless the above conditions are met for both motion and light level readings.

ADVANCED

Philips ES/HB

EasySense sensor combines occupancy sensing, daylight harvesting and institutional tuning in one compact solution. This is an ideal control for any high bay application. Each device allows you to turn on/off occupancy and/or daylight harvesting functions as well as set the full light output, background light level, occupancy prolong time, occupancy grace fading time & occupancy time out/hold time. Requires use of EasySense Pre-Programmed Control Device (ES/PCD) & Commissioning IR Blaster (ES/IR); one of each needed per project. (Sold separately)

Legrand FSP-211

FSP-211 offers fully adjustable high and low dimmed light levels with optional photocell. Hold off setpoint with automatic calibration option. Adjustable time delay and cut off delay. Sensor adjustable programming with handheld wireless configuration tool; FSIR-100. (Sold separately. One needed per project)

Legrand FSP-311

FSP-311 offers fully adjustable high and low dimmed light levels with optional photocell. Hold off setpoint with automatic calibration option. Adjustable time delay and cut off delay. Sensor adjustable programming via iOS® or Android® 'Sensor Configuration' App.

Enlighted 5S/CU/IL

Bundled System with Enlighted 5E sensor (SU-5S-H-IL), Control Unit (CU-4E-FM) and Cable (CBL-5E-CU4-30N). Fixtures are controlled based on occupancy and ambient light. Includes ability to group fixtures together and connect to a switch to zone fixtures for group operation. Provided factory installed components only. Enlighted system provided by others. Contact factory for more information.

Enlighted 5S/CU/CL

Bundled System with Enlighted 5E sensor (SU-5S-H-CL), Control Unit (CU-4E-FM) & Cable (CBL-5E-CU4-30N). Fixtures are controlled based on occupancy & ambient light. Includes individual lighting control plus connection to Enlighted Energy Manager. The Energy Manager provides data analysis for all data collected by the Enlighted Smart Sensors for energy, occupancy & environment. Provided factory installed components only. Enlighted system provided by others. Contact factory for more information.

Enlighted 5S/CU/IOT

Bundled System with Enlighted 5E sensor (SU-5S-H-IOT), Control Unit (CU-4E-FM) and Cable (CBL-5E-CU4-30N). Fixtures are controlled based on occupancy and ambient light. Includes individual lighting control plus connection to Enlighted Energy Manager. The Energy Manager provides data analysis for all data collected by Enlighted Smart Sensors for energy, occupancy & environment. Additionally, the IOT functionality takes the data access and function beyond just lighting to a wide range of applications beyond the standard connected lighting controls. Provided factory installed components only. Enlighted system provided by others. Contact factory for more information.

ENDEAVOUR

LINEAR HIGH BAY

OPTIONS



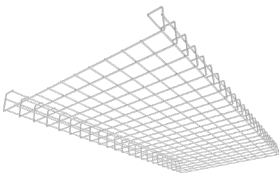
CORDx

Cords available in 6ft, 10ft, 12ft & 20ft
(Inquire for additional options) Plug
options available



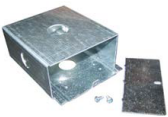
QDCx

Quick Disconnect Cords available
in 6ft, 10ft, 12ft & 20ft (Inquire for
additional options)



WC

11 GA Wire Cage



FMB

Includes rigid box to attach to the fixture,
provides for single point mounting to accept a
pendant, hook or conduit hub (sold separately)



HUB 3/4

Conduit Hub 3/4" for Pendant Mounting



HOOK

Cast Iron Hook for Single
Point Mounting



HB-XX-18Y-PAD

Includes 2 adjustable cable hangers.
Available in 60", 120", 180" & 240"

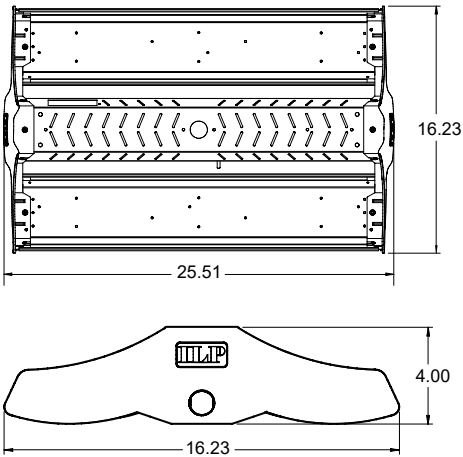


SMBZKIT

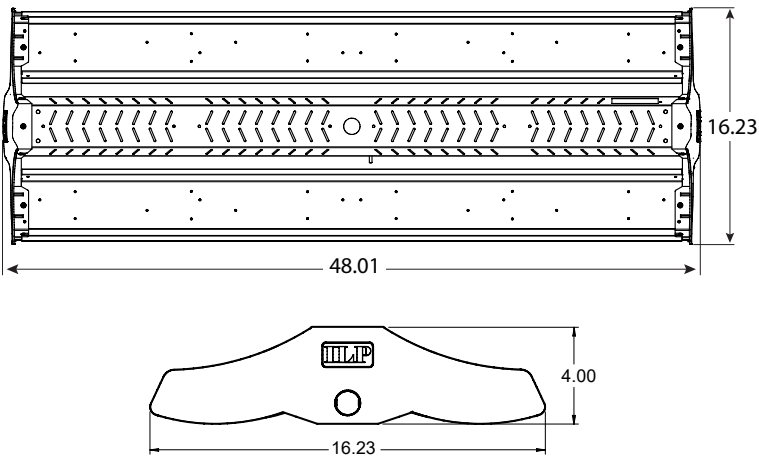
Surface Mount Bracket Kit provides
a 2" space above the fixture

LINE DRAWINGS

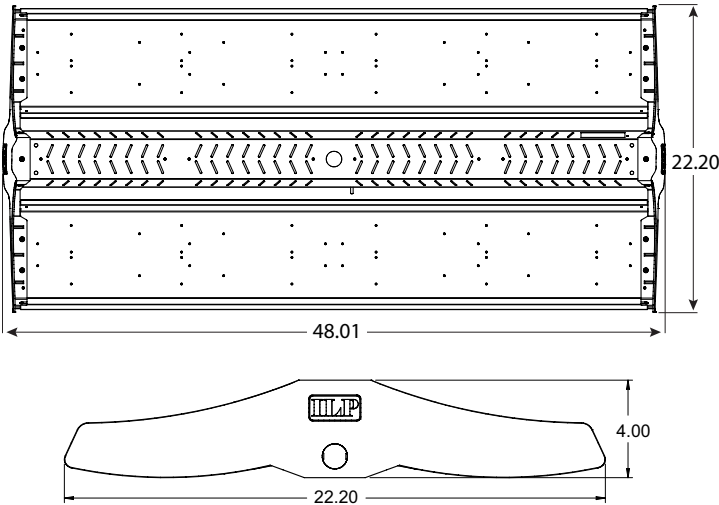
8L - 24L



30L



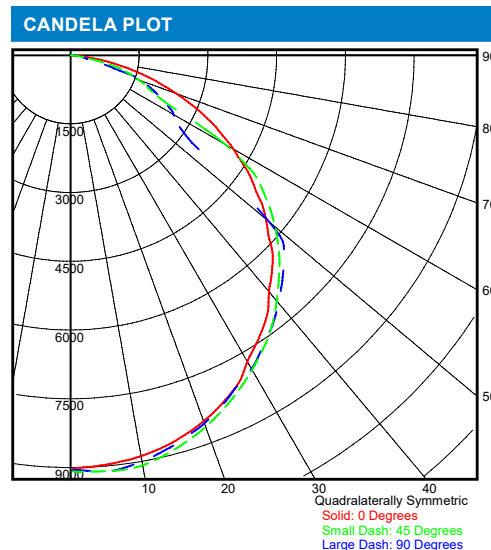
36L - 60L



PHOTOMETRIC DATA

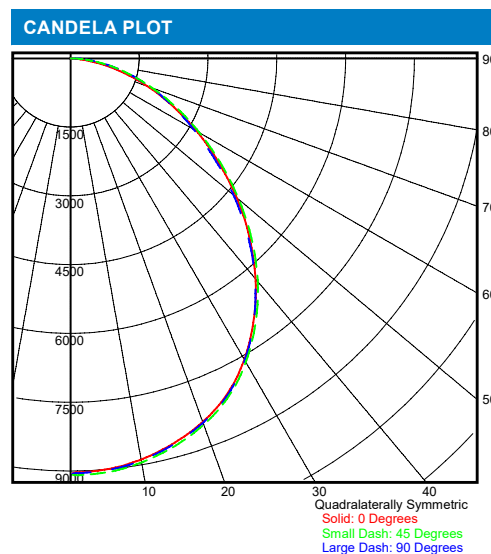
LUMINAIRE DATA	
Part Number	EDV-24L-U-50
Description	Endeavour 2ft High Bay, 24000lm, without lens
Fixture Lumens (lm)	24,950 lm
Wattage (W)	164 W
Efficacy (lm/W)	152 lm/W
Mounting	Recessed
Spacing Criteria	0° = 1.27, 90° = 1.29

ZONAL LUMEN SUMMARY		
Zone	Lumens (lm)	% Fixture
0° - 40°	11,878	48%
0° - 60°	20,932	84%
0° - 90°	24,950	100%
90° - 180°	0	0%
0° - 180°	24,950	100%



LUMINAIRE DATA	
Part Number	EDV-24L-U-50-FRL
Description	Endeavour 2ft High Bay, 24000lm, with frosted acrylic lens
Fixture Lumens (lm)	23,600 lm
Wattage (W)	163 W
Efficacy (lm/W)	145 lm/W
Mounting	Recessed
Spacing Criteria	0° = 1.24, 90° = 1.24

ZONAL LUMEN SUMMARY		
Zone	Lumens (lm)	% Fixture
0° - 40°	11,452	49%
0° - 60°	19,284	82%
0° - 90°	23,600	100%
90° - 180°	0	0%
0° - 180°	23,600	100%



LUMINAIRE DATA	
Part Number	EDV-24L-U-50-FRL-UP/2L
Description	Endeavour 2ft High Bay, 24000lm, w/ frosted acrylic lens & 2000lm uplight
Fixture Lumens (lm)	25,600 lm
Wattage (W)	176 W
Efficacy (lm/W)	145 lm/W
Mounting	Recessed
Spacing Criteria	0° = 1.24, 90° = 1.24

ZONAL LUMEN SUMMARY		
Zone	Lumens (lm)	% Fixture
0° - 40°	11,452	45%
0° - 60°	19,284	75%
0° - 90°	23,600	92%
90° - 180°	2,000	8%
0° - 180°	25,600	100%

