



BABA COMPLIANCE

Build America, Buy America



ILP x BABA

ILP has been manufacturing lighting products in the United States for over 20 years. At our headquarters in central Florida, products are brought to life from ideation to production, with many now meeting BABA requirements.

To ensure compliance, ILP is committed to sourcing material domestically, partnering with suppliers and vendors who follow BABA guidelines, and maintaining thorough records of our supply chain to continue adapting to regulatory monitoring during any audits or inspections.



WHAT IS THE BABA ACT?

The Build America, Buy America (BABA) Act was enacted as part of the Infrastructure Investment and Jobs Act of 2021 to emphasize the use of American-made products in infrastructure projects funded by Federal financial assistance.

The BABA Act prioritizes three specific categories of products: iron or steel products, construction products, and manufactured products, including LED lighting projects.

To comply with the BABA Act, products must be manufactured in the United States, with the cost of domestic components exceeding 55 percent of the total component cost. This stipulation is known as the Buy America Requirement.

BAA vs. BABA

While both the BAA and BABA aim to promote the use of American-made products, they do so within different contexts and with slightly different requirements and scopes.

KEY DIFFERENCES

Scope and Focus

BAA: Primarily targets infrastructure projects, when the federal government is buying for its own use (ie: the Army purchasing material for building renovation).

BABA: Applies to all federal procurements, not just infrastructure, where the federal government is providing financial assistance (ie: the government providing funding for a school renovation).

Product Coverage

BAA: Focuses on iron, steel, manufactured products, and construction materials. 65% of total cost of components must be from the US, with a COTS ("Commercially Available Off-the-Shelf") exception available.

BABA: Covers a broader range of goods and materials used in government contracts. 55% of total cost of components must be from the US, with no COTS exceptions.

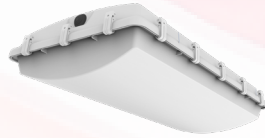
Exemptions and Waivers

Both acts allow for certain exemptions, but the specific conditions and processes for obtaining these waivers may differ.

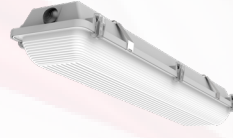


ILP BABA Compliant Products

HAZARDOUS



Hazardous High Bay
(HZB)



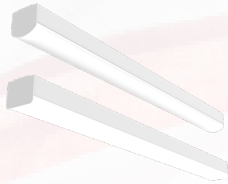
Hazardous Vapor Tight
(HZV)

STAIRWELL

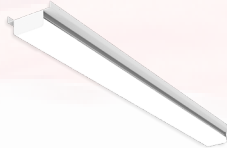


Cavern Stairwell (CV)

STRIPS & KITS

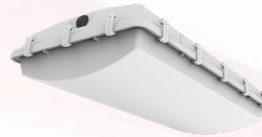


Discovery Linear Strip
(DSC)

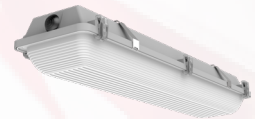


VARI Linear Retrofit
(VARI)

VAPOR TIGHTS

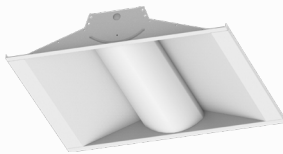


Vapor Tight High Bay
(BL)

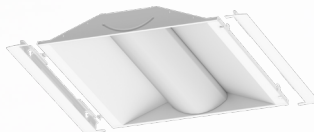


Narrow Linear Vapor Tight
(WTZ)

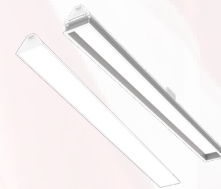
TROFFERS & TROFFER KITS



Volumetric Troffer
(VOLA)



Volumetric Troffer Retrofit Kit
(LANCE)



Discovery Narrow Troffer
(DNT)

WRAPS



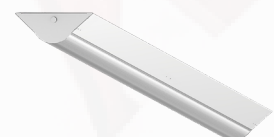
Narrow Wrap
(FNW)



Wide Wrap
(FWW)



Curved Wrap
(SQ)



Curved Wide Base Wrap
(SQ-WB)