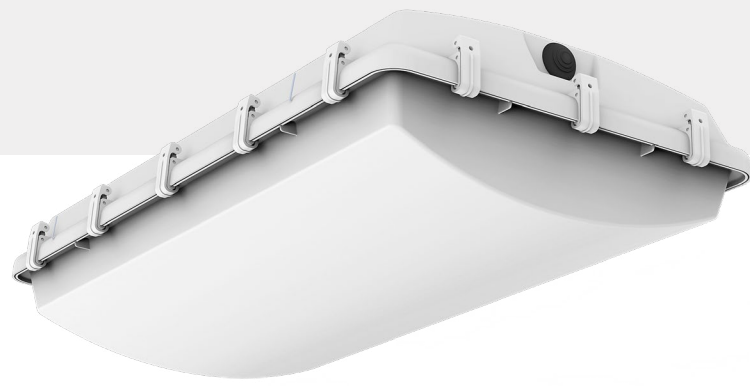




BL SERIES

VAPOR TIGHT HIGH BAY





BL SERIES

ILP'S BEST IN CLASS VAPOR TIGHT HIGH BAY

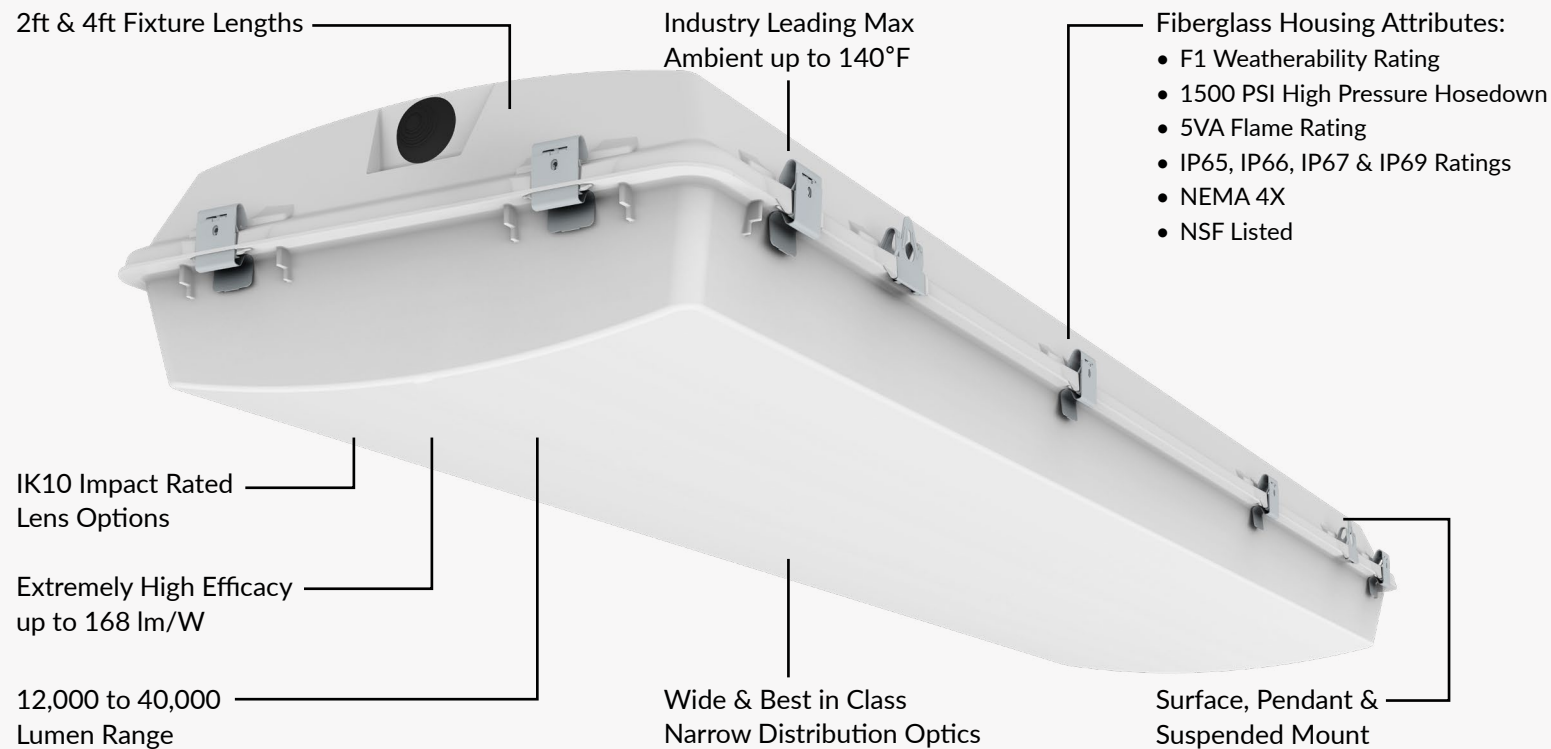
BL Series is an industry leading luminaire designed for applications requiring a robust, durable, sealed and gasketed construction for extreme environments. The NSF listed fiberglass enclosure is easy to service and clean, ideal for maintaining a safe environment for food and beverage processing. With an enhanced feature set including industry leading ambient operating temperatures, best in class distribution options, extremely high efficiency, wide lumen range, and multiple mounting options make the BL Series the prominent choice for nearly any high bay application.



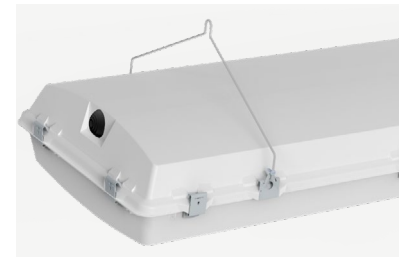
SUITABLE APPLICATIONS

- Food & Beverage Prep
- Pharmaceutical
- Industrial
- Coolers / Freezers
- Healthcare
- Saw Mills
- Greenhouse
- Education
- Hockey Rinks

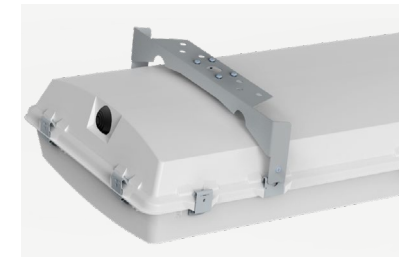
FEATURES



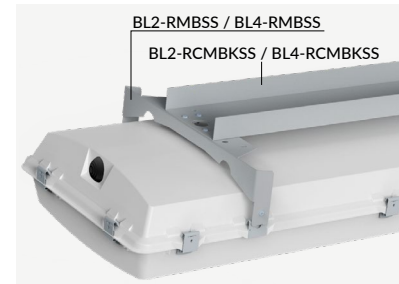
MOUNTING OPTIONS



V-Hooks
Provided standard for dual point chain or cable hanging



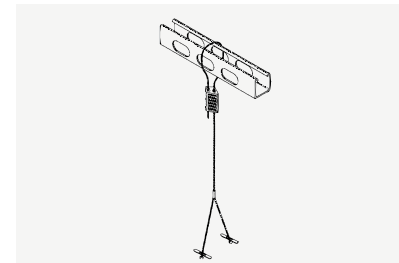
BL2-RMBSS / BL4-RMBSS
Stainless Steel Rigid Mounting Beam for secure surface mounting or dual pendant mounting. Requires use of HUB 1/2 for pendant mounting.



BL2 & BL4-RCMBKSS
Stainless Steel Rigid Center Mounting Plate for single point mounting. Requires use of HUB 3/4 and RMBSS.



SMB KIT BL
Surface Mount V-Clip Brackets



HB-XXX-18Y-PAD
Includes 2 adjustable cable hangers available in 60", 120", 180" & 240"



HUB 1/2 & HUB 3/4
HUB 1/2 - 1/2" Conduit Hub for dual pendant mounting
HUB 3/4 - 3/4" Conduit Hub for single pendant mounting

OPTIONS

- High Ambient Temperature Option
- Emergency Battery Backups
 - 7W to 20W Output
 - -4°F Cold Temperature Operation
 - CEC Title 20 Compliant Options
- Generator Transfer Device
- 347V & 480V
- 10kV Surge Protector
- Stainless Steel Latches
- Tamper Proof Screws
- Threaded HUBs for Side Power Entry
- Cords
- Lens Options
 - Clear & Frosted Acrylic
 - Clear & Frosted Polycarbonate

BASIC CONTROLS OPTIONS

- WLOS: On/Off
- WLOSPC: On/Off with Photocell
- USB: User Selectable Bi-Level Dimming
- BDxx: Preset Bi-Level Dimming
- BDxxPC: Preset Bi-Level Dimming with Photocell
- MWS: On/Off Installed Behind Lens
- MWUSB: User Selectable Bi-Level Dimming Behind Lens

ADVANCED CONTROLS



FIXTURE PERFORMANCE

PART NUMBERS	3000K		3500K		4000K		5000K		Watts ²	CRI	DLC Listings	Replaces
	Lumens	Efficacy	Lumens	Efficacy	Lumens	Efficacy	Lumens	Efficacy				
BL2-12L-U-XX-CAL	12,062 lm	150 lm/W	12,465 lm	155 lm/W	12,887 lm	160 lm/W	13,150 lm	164 lm/W	80W	>80	Premium	4T8
BL2-18L-U-XX-CAL	17,960 lm	147 lm/W	18,560 lm	152 lm/W	19,188 lm	157 lm/W	19,580 lm	160 lm/W	122W	>80	Premium	4T5HO, 6T8
BL2-24L-U-XX-CAL	23,060 lm	145 lm/W	23,831 lm	150 lm/W	24,637 lm	155 lm/W	25,140 lm	158 lm/W	159W	>80	Premium	6T5HO
BL4-12L-U-XX-CAL	12,145 lm	154 lm/W	12,550 lm	159 lm/W	12,975 lm	165 lm/W	13,240 lm	168 lm/W	79W	>80	Premium	4T8
BL4-18L-U-XX-CAL	19,308 lm	148 lm/W	19,954 lm	153 lm/W	20,629 lm	158 lm/W	21,050 lm	161 lm/W	131W	>80	Premium	4T5HO, 6T8
BL4-24L-U-XX-CAL	23,977 lm	151 lm/W	24,779 lm	156 lm/W	25,617 lm	162 lm/W	26,140 lm	165 lm/W	159W	>80	Premium	6T5HO
BL4-30L-U-XX-CAL	31,618 lm	151 lm/W	32,675 lm	156 lm/W	33,781 lm	162 lm/W	34,470 lm	165 lm/W	209W	>80	Premium	10T8, 8T5HO
BL4-36L-U-XX-CAL	35,874 lm	149 lm/W	37,073 lm	154 lm/W	38,328 lm	159 lm/W	39,110 lm	162 lm/W	241W	>80	Premium	10T8, 8T5HO
BL4-40L-U-XX-CAL	38,929 lm	153 lm/W	40,230 lm	158 lm/W	41,591 lm	164 lm/W	42,440 lm	167 lm/W	254W	>80	Premium	12T8, 10T5HO

NOTE: Values are nominal, see IES file for more detail

²Electrical data at 25C (77F). Actual wattage may differ by +/-10%.

BL SERIES

VAPOR TIGHT HIGH BAY



407-478-3759
WWW.ILP-INC.COM

An ILLUMUS Brand