



[D]ISCOVERY

LINEAR STRIP



QUALITY CONSTRUCTION

SLEEK AESTHETIC

- Injection-molded Endcap Designs
- No Visible Fasteners, Smooth Design
- 2', 4' and 8' Lengths Available
- Curved or Flat Frosted Acrylic Lens
- Low UGR optics - no extra shielding needed
- Recessed Light Engine to reduce Glare

DRIVER OPTIONS

- 0-10V Dimmable Driver (100%-10%)
- 1% Dimming Option
- Bi-Level and Line Voltage Dimming Options
- 347V High Voltage Driver Option

ENHANCED PERFORMANCE

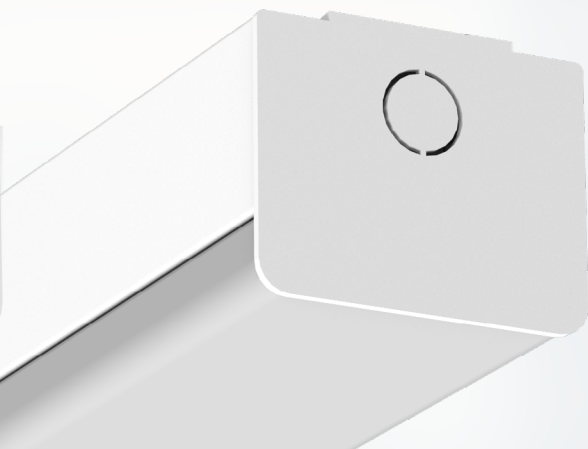
- 18 Lumen Packages Ranging 2,000L - 20,000L
- Standard and High Efficacy Packages
- 3000K, 3500K, 4000K and 5000K Options
- 80 or 90 CRI
- 85°F - 122°F Ambient Temperature Range
- Choice of Narrow or Wide Distribution Optics
- ETL Listed for Dry and Damp Locations
- Multiple dimming and Sensor Options Available to control Occupied and Unoccupied light levels
- Buy American Act Compliant (BAA)

ENDCAP OPTIONS

Shown without Knockout (NEKO)



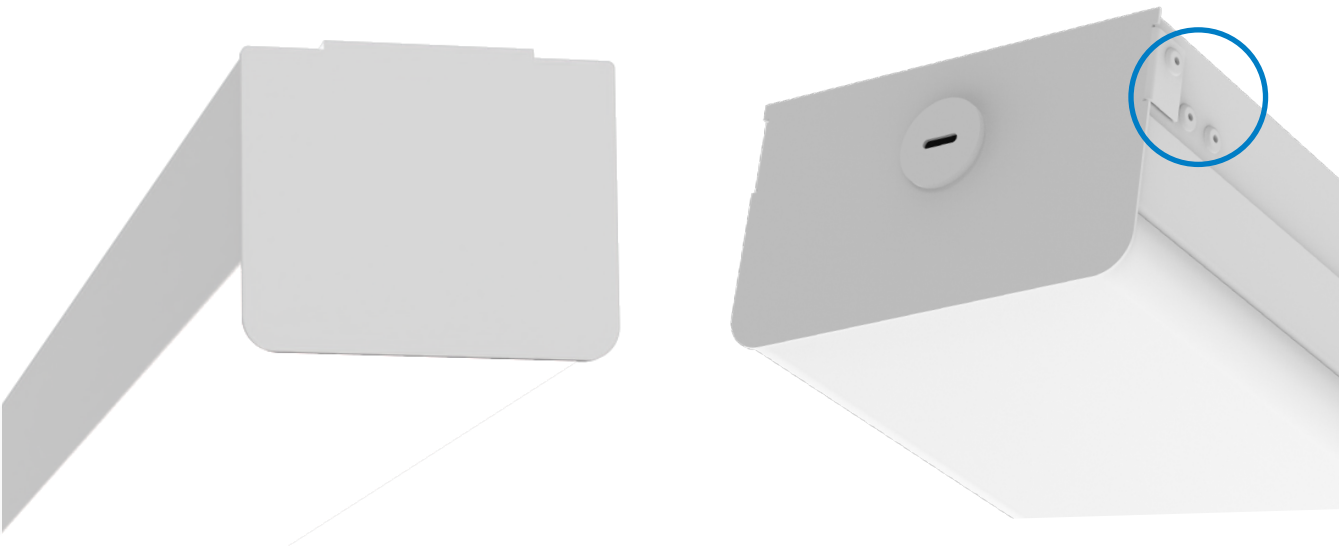
Shown with Knockout (Standard)



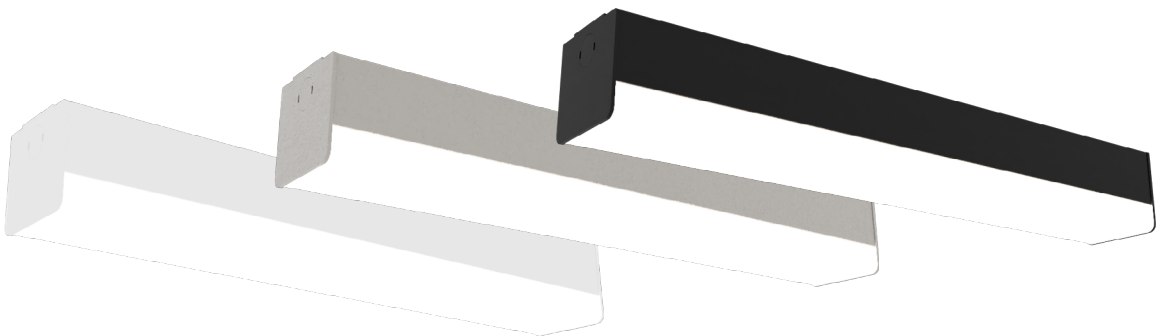
NO VISIBLE FASTENERS, SMOOTH DESIGN

DISCOVERY

Other Models



WHITE (std.), SILVER, BLACK or CUSTOM FINISH



CURVED OR FLAT FROSTED ACRYLIC LENS

Available in both curved and flat end cap options with precision designed low UGR lenses without need for additional shielding

Flat Lens



Round Lens



ENHANCED FEATURES

CONTROLS, YOUR WAY

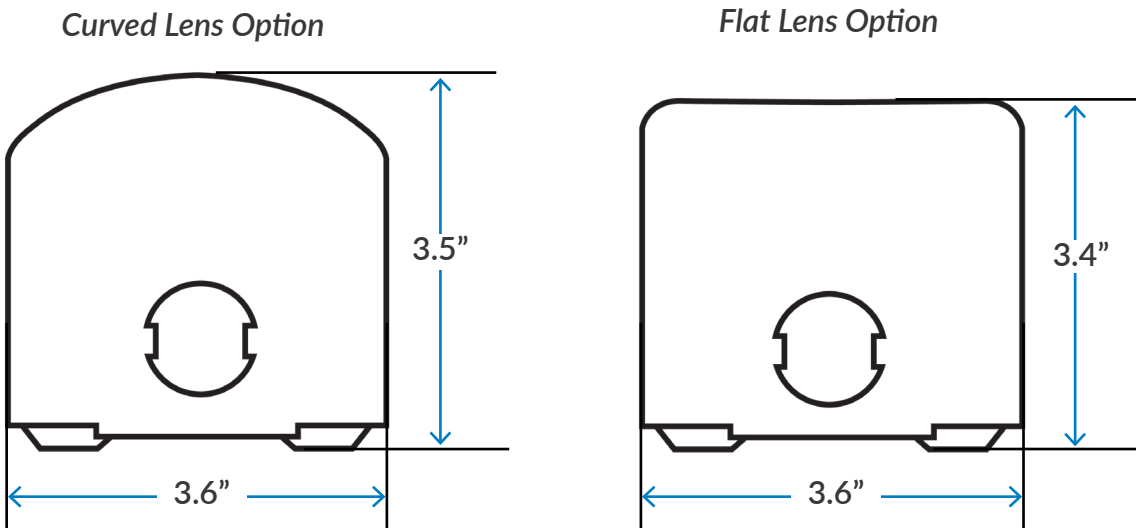
The Discovery Linear Strip is available with a variety of compatible wireless grouping controls in order to cater to your space and maximize energy savings in the way you want.



WIDE & NARROW DISTRIBUTION OPTIONS



FIXTURE DIMENSIONS

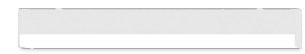




ENDLESS OPTIONS

3 HOUSING LENGTHS, VAST LUMEN RANGE, & EFFICACY

The Discovery Linear Strip Luminaire comes in three sizes (2', 4', 8') and vast lumen range in Standard & High Efficacy (up to 175lm/W) options, catering to your project aesthetics, functionality, and flexibility.



2'

2,000 lm - 4,000 lm

High Efficacy (HE) Models Only



4'

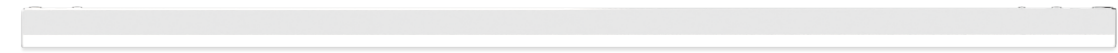
2,000 lm - 10,000 lm

2,000 lm - 10,000 lm

High Efficacy (HE) Models

2,000 lm - 6,000 lm

Standard Efficacy (SE) Models



8'

5,000 lm - 20,000 lm

5,000 lm - 20,000 lm

High Efficacy (HE) Models

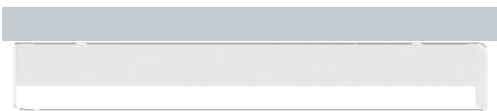
5,000 lm - 12,000 lm

Standard Efficacy (SE) Models

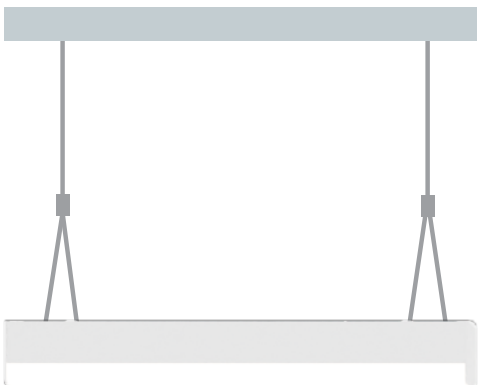
MULTIPLE MOUNTING OPTIONS

Four different mounting options to fit your space.

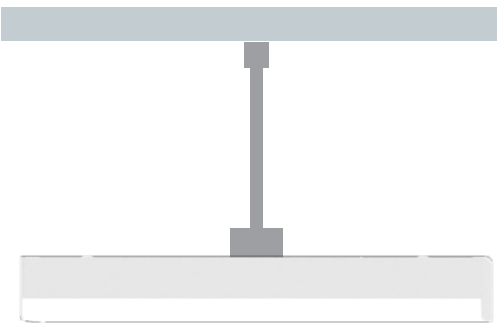
Surface



Cable



Pendant



Wall



DISCOVERY

LINEAR STRIP

