

HL
HAZARDOUS LOCATION



TRUSTED SOLUTIONS FOR HAZARDOUS LOCATIONS

ILP offers Class 1 Division 2 UL844 Listed products robustly designed to withstand the demanding rigorous conditions in Hazardous environments. These American Produced products offer the most enhanced feature set in the industry with unrivaled operating temperatures, efficacy, lumen range, and mounting options to provide you with highly versatile products you can trust to perform in the most demanding environments.

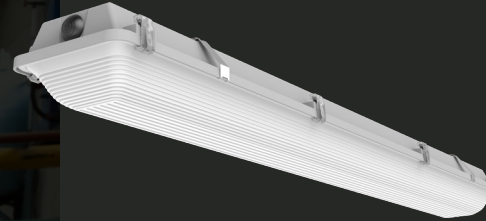
SUITABLE APPLICATIONS

- Chemical Processing Facilities
- Industrial & Manufacturing Plants
- Ethanol & Petroleum Refineries
- Wastewater & Treatment Facilities
- Power Generation Facilities
- Coolers & Freezers
- Food & Beverage Preparation





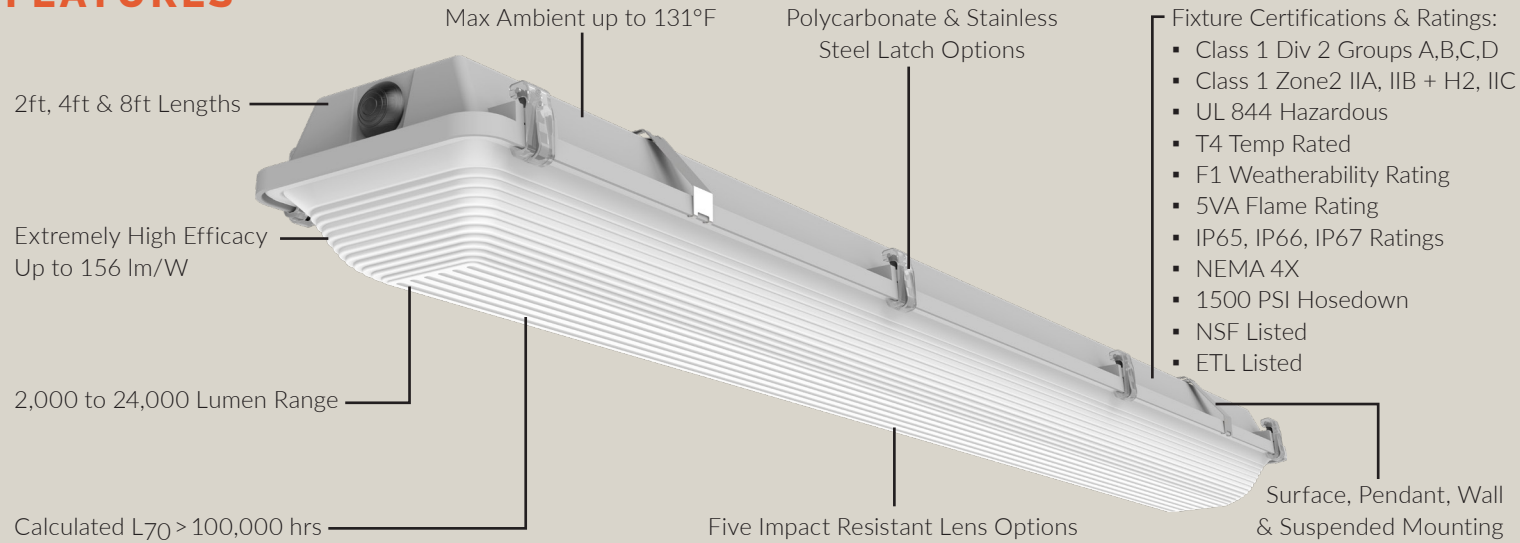
ILP PRODUCT LINE UP



FEATURES & PERFORMANCE	HZV	HZB
LUMEN RANGE	2,000 - 24,000	12,000 - 42,000
EFFICACY (lm/W) UP TO	156	168
CRI	>80	>80
CCT OPTIONS	30, 35, 40, 50	30, 35, 40, 50
DISTRIBUTION	Wide	Wide & Narrow
VOLTAGE	120-277V - OPT. 347-480V	120-277V - OPT. 347-480V
SIZES	2FT, 4FT & 8FT	2FT & 4FT
HOUSING	Linear	Linear
LENSING	Clear & Frosted Acrylic, Clear & Frosted Polycarbonate	Clear & Frosted Acrylic, Clear & Frosted Polycarbonate
LIFE	>100K	>100K
AMBIENT RANGE	-40°F - 131°F	-40°F - 140°F
EMERGENCY	✓	✓
RATINGS	WET, IP65, IP66, IP67, NSF	WET, IP65, IP66, IP67, IP69, IK10, NSF
CERTIFICATIONS	Class 1 Div 2 Groups A,B,C,D, Class 1 Zone 2 IIA, IIB + H2, IIC, UL844, T4 Temp Rated	Class 1 Div 2 Groups A,B,C,D, Class 1 Zone 2 IIA, IIB + H2, IIC, UL844, T4 Temp Rated
BAA COMPLIANT	✓	✓
DLC	Premium	Premium

HZV NARROW LINEAR VAPOR TIGHT

FEATURES



CLASS 1 DIV 2
GROUPS A, B, C, D



AVAILABLE OPTIONS

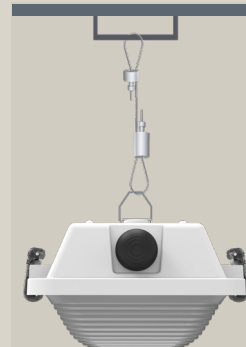
- High Voltage 347-480V Drivers
- Emergency Battery Backup
- Threaded HUBs for Side Power Entry
- Stainless Steel Latches
- Tamper Proof Screws
- Cords

MOUNTING OPTIONS

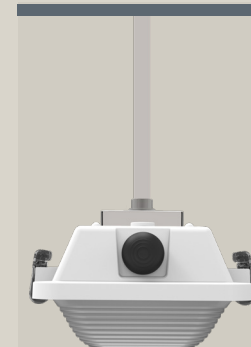
Surface



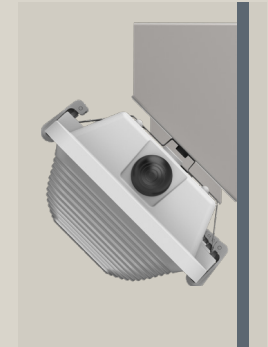
Suspended



Pendant

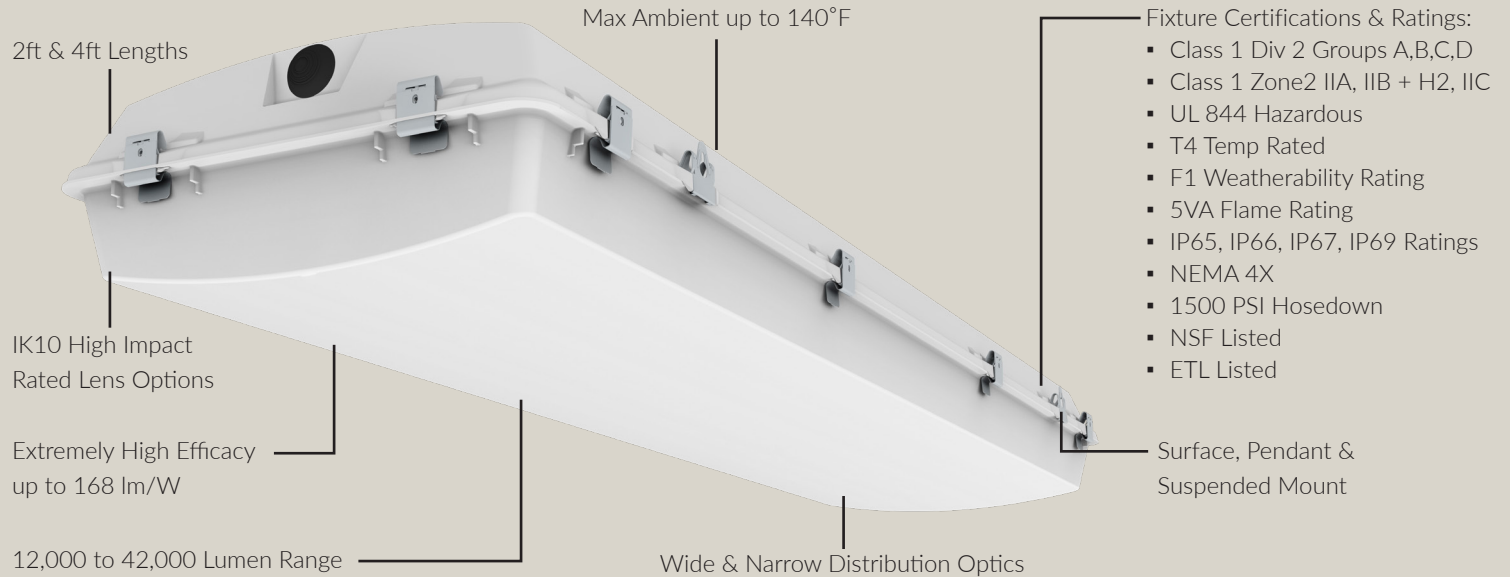


45° Angle Wall Mount



HZB VAPOR TIGHT HIGH BAY

FEATURES



- Fixture Certifications & Ratings:
- Class 1 Div 2 Groups A,B,C,D
 - Class 1 Zone2 IIA, IIB + H2, IIC
 - UL 844 Hazardous
 - T4 Temp Rated
 - F1 Weatherability Rating
 - 5VA Flame Rating
 - IP65, IP66, IP67, IP69 Ratings
 - NEMA 4X
 - 1500 PSI Hosedown
 - NSF Listed
 - ETL Listed

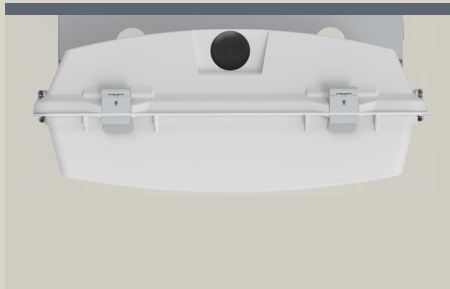


CLASS 1 DIV 2
GROUPS A, B, C, D

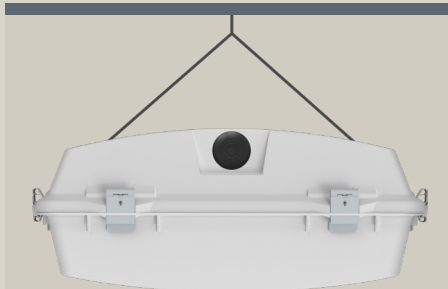


MOUNTING OPTIONS

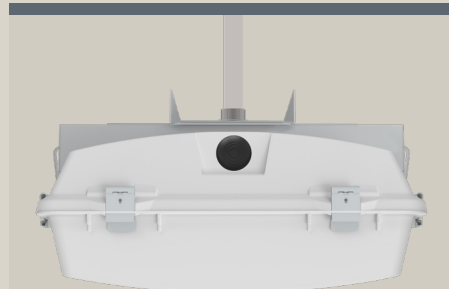
Surface



Suspended



Pendant



AVAILABLE OPTIONS

- High Voltage 347-480V Drivers
- High Ambient Temperature Option
- Emergency Battery Backup
- Threaded HUBs for Side Power Entry
- Stainless Steel Latches
- Tamper Proof Screws
- Cords

RATINGS DEFINED

IEC - IP RATING SYSTEM

First Digit - Degree of Protection Against Solid Objects		Second Digit - Degree of Protection Against Water	
0	Non-protected	0	Non-protected
1	Protected against objects greater than 50mm	1	Protected against vertically dripping water
2	Protected against objects greater than 12.5mm	2	Protected against vertically dripping water when tilted at 15°
3	Protected against objects greater than 2.5mm	3	Protected against vertically spraying water up to a 60° tilt
4	Protected against objects greater than 1mm	4	Protected against splashing water from any direction
5	Dust Protected	5	Protected against water jets up to a 6.3mm nozzle
6	Dust-tight, no dust ingress	6	Protected against water jets up to a 12.5mm nozzle
		7	Protected against water submersion of up to 1m for 30mins
		8	Protected against continuous water submersion of 1m or greater
		9	Protected against high pressure and temperature water

T-RATING IGNITION TEMPS

Division 1 & 2	Ignition Temp*
T1	842°F
T2	572°F
T2A	536°F
T2B	500°F
T2C	446°F
T2D	419°F
T3	392°F
T3A	356°F
T3B	329°F
T3C	320°F
T4	275°F
T4A	248°F
T5	212°F
T6	185°F

* Max surface temp fixture can emit without igniting

HAZARDOUS LOCATION RATINGS DEFINED - UL844

Class - Defines the type of hazardous substances in an environment

Class I - Gas

Flammable gases or vapors present in sufficient quantities to produce explosive or ignitable mixtures

Class I Applications: Aircraft Hangers, Dispensing Locations, Fueling Locations, Gas Plants, Petroleum Refineries, Wastewater Treatment

Class II - Dust

Combustible or dust present in environment

Class II Applications: Coal Plants, Feed, Flour & Grain Mills, Food Processing Facilities, Medicines & Plastics Production

Class III - Fibers

Ignitable fibers or flyings present in environment

Class III Applications: Cotton Gins, Textile Manufacturing, Seed Mills

Division - Defines the probability of ignitable hazardous material based on presence in environment

Division 1 - Normally Hazardous

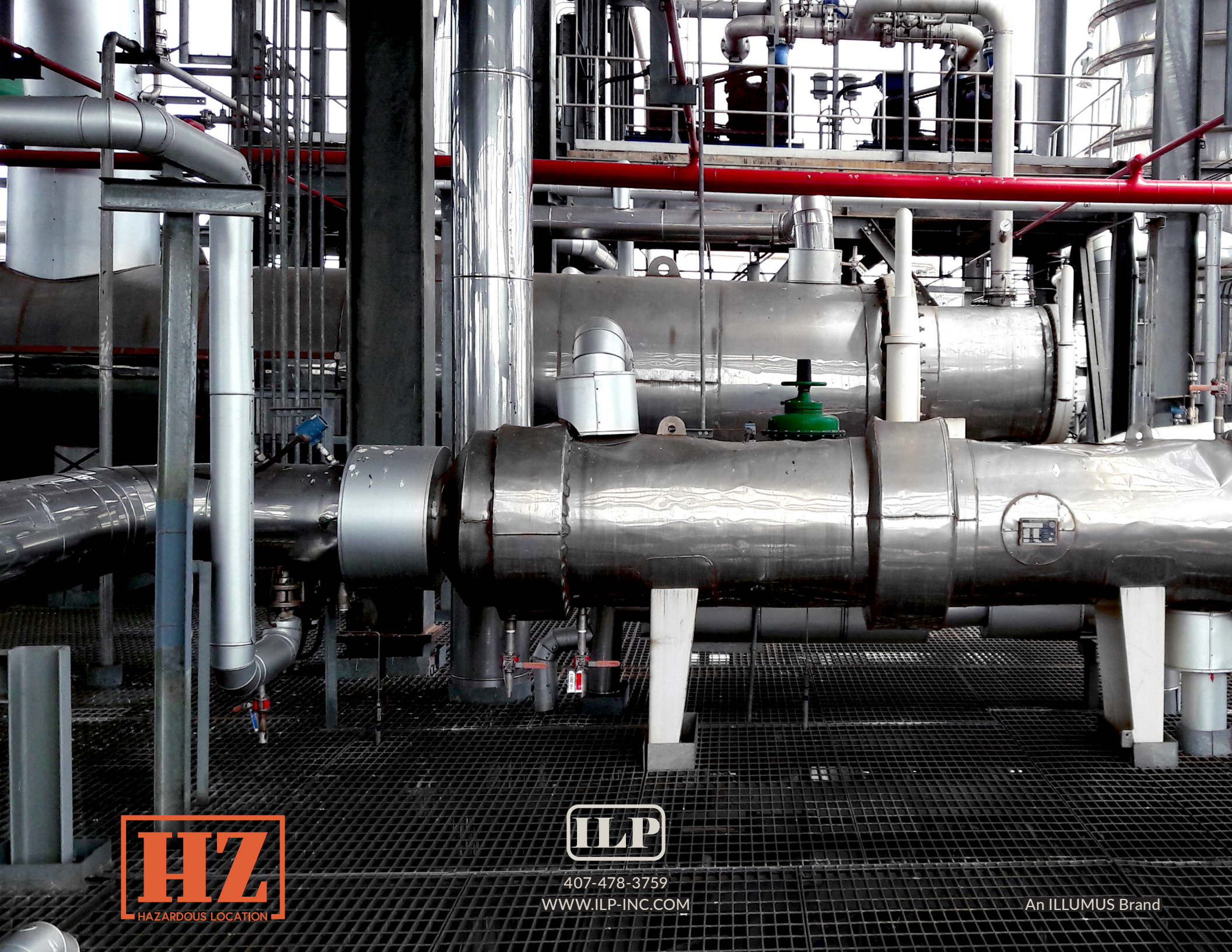
Ignitable concentrations of flammable/combustible gases or liquid vapors may exist under normal operating conditions

Division 2 - Not Normally Hazardous

Ignitable concentrations of flammable/combustible gases or liquid vapors do not exist under normal operating conditions

Group - Defines type of hazardous material

Group A	Group B	Group C	Group D	Group E	Group F	Group G
Acetylene	Hydrogen	Ethylene	Propane	Material Dusts	Carbonaceous Dusts	Non-Conductive Dusts



407-478-3759
WWW.ILP-INC.COM

An ILLUMUS Brand