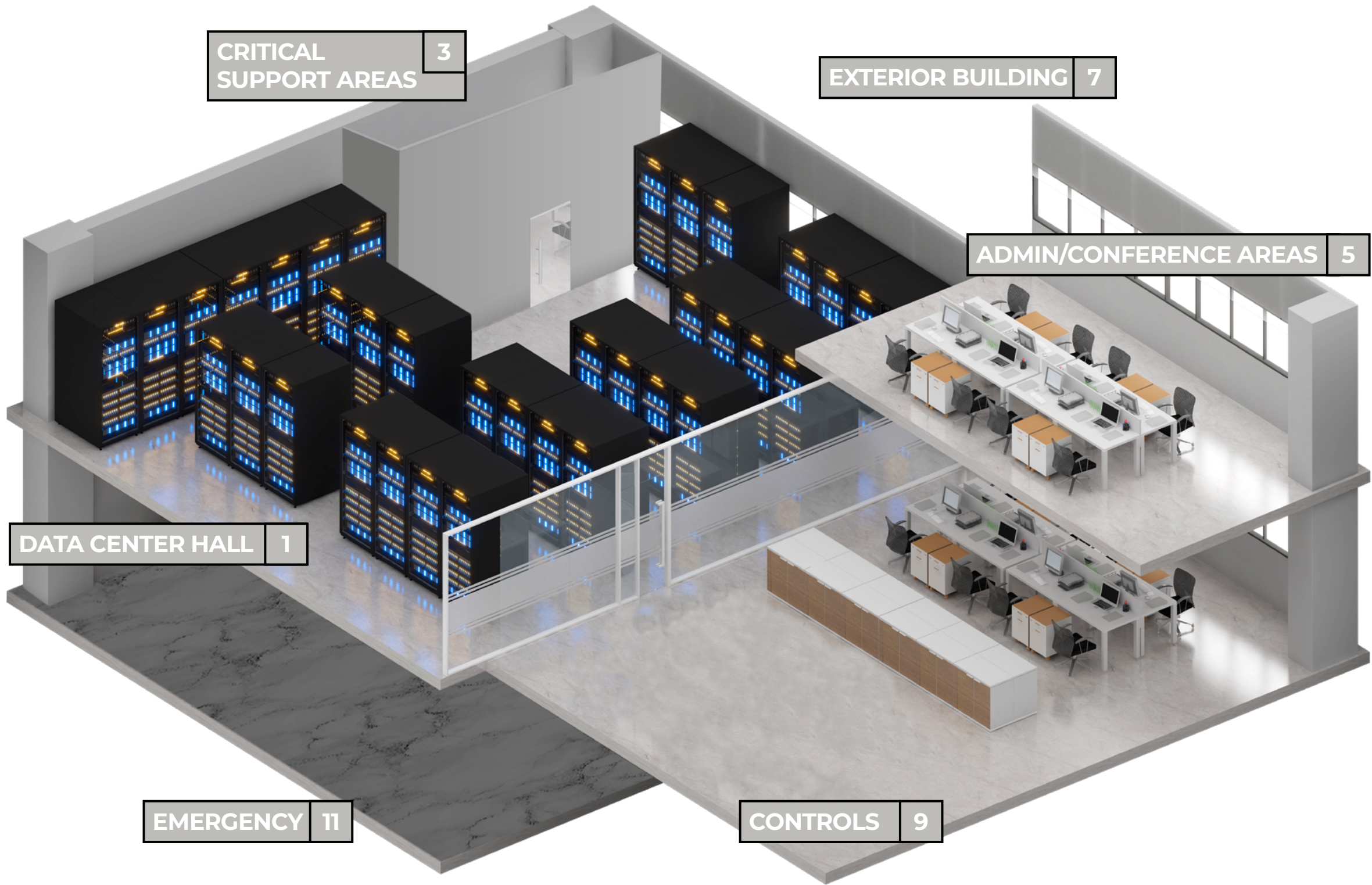




**DATA
CENTER
APPLICATION
BROCHURE**

DATA CENTER



CONTENT

DATA CENTER HALL	1
CRITICAL SUPPORT AREAS	3
ADMIN/CONFERENCE AREAS	5
EXTERIOR BUILDING	7
CONTROLS	9
EMERGENCY	11

DATA CENTER HALL

Data center halls and hallways require energy-efficient lighting that ensures uniform illumination and minimal heat output. High-lumen, low-power LED fixtures reduce glare and shadows for safer maintenance. Hallways and walkways pose unique challenges like low mounting heights and narrow spaces, requiring durable, low-profile, and easy-to-install solutions. Thoughtful fixture selection enhances functionality, efficiency, and reliability throughout the data center.

DISCOVERY LINEAR STRIP (DSC)

- Highly configurable spec grade strip
- No visible fasteners providing a smooth uninterrupted design
- Standard Efficacy (SE) and High Efficacy (HE) lumen packages
- 2', 4' & 8' lengths available

DISCOVERY NARROW (DNT)

- Sleek, compact and modern troffer
- Slim 4" lens width
- Grid, Flange, Surface & Skylight mounting options
- 1,000 to 12,000 Lumens
- 2', 4', & 8' Sizes

LINEAR STRIP (VS 3.0)

- 2.8" Width
- Lumen and CCT Selectable
- 2,000 to 12,000 Lumen
- 2', 4', & 8' Sizes

SLIM STRIP (SS 3.0)

- 1.9" Width
- Lumen and CCT Selectable
- 2,000 to 12,000 Lumens
- 2', 4', & 8' Sizes

VOLUMETRIC SELECTABLE KIT (VTK)

- Shallow, Lightweight, 3-Piece Versatile Volumetric Selectable Troffer Retrofit Kit
- 1x4', 2x2', & 2x4' Sizes
- 2,000 to 5,000 Lumens

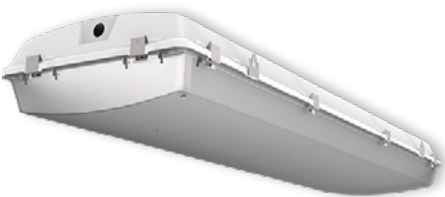
VOLUMETRIC SELECTABLE TROFFER (VST)

- Volumetric design
- Lumen & CCT selectable
- 1x4', 2x2' & 2x4' sizes



CRITICAL SUPPORT AREAS

The data center's critical support areas including cooling and ventilation systems require reliable and uninterrupted lighting. LED fixtures for this area should provide efficient and durable lighting with low maintenance needs, produce minimal heat over extended usage periods, and help to maintain a stable temperature to reduce energy usage and cooling costs.



BLIZZARD HIGH BAY (BL)

- Robust & durable wide body vapor tight high bay
- Extremely high efficacy up to 168 lm/W
- 2' & 4' fixture lengths



DISCOVERY LINEAR STRIP (DSC)

- Highly configurable spec grade strip
- No visible fasteners providing a smooth uninterrupted design
- Standard Efficacy (SE) and High Efficacy (HE) lumen packages
- 2', 4' & 8' lengths available



LINEAR STRIP (VS 3.0)

- 2.8" Width
- Lumen and CCT Selectable
- 2,000 to 12,000 Lumen
- 2', 4', & 8' Sizes



SLIM STRIP (SS 3.0)

- 1.9" Width
- Lumen and CCT Selectable
- 2,000 to 12,000 Lumens
- 2', 4', & 8' Sizes



VAPOR TIGHT (VVT 2.0)

- Impact-resistant narrow linear vapor tight
- 5VA flame-rated polycarbonate housing, IP65 rated
- Lumen and CCT Selectable
- 3,000 to 12,000 lumens
- 2', 4' & 8' Sizes



NARROW LINEAR VAPOR TIGHT (WTZ)

- Sealed and gasketed vapor tight
- Durable construction for the harshest environments
- 2', 4' & 8' sizes

ADMIN/ CONFERENCE AREAS

Lighting in administrative and conference areas should be comfortable, functional, and energy-efficient. Soft, even illumination reduces eye strain, while dimmable LED fixtures allow for adjustable lighting. A well-designed system enhances productivity and maintains efficiency while improving worker well-being.



DISCOVERY NARROW (DNT)

- Sleek, compact and modern troffer
- Slim 4" lens width
- Grid, Flange, Surface & Skylight mounting options
- 1,000 to 12,000 Lumens
- 2', 4', & 8' Sizes



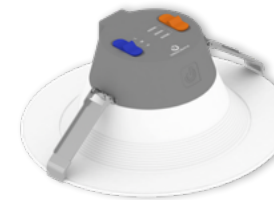
VOLUMETRIC SELECTABLE KIT (VTK)

- Shallow, Lightweight, 3-Piece Versatile Volumetric Selectable Troffer Retrofit Kit
- 1x4', 2x2', & 2x4' Sizes
- 2,000 to 5,000 Lumens



VOLUMETRIC SELECTABLE TROFFER (VST)

- Volumetric design
- Lumen & CCT selectable
- 1x4', 2x2' & 2x4' sizes



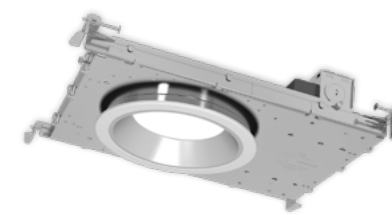
INNOFIT PLUS

- 4", 6", 8" & 9.5" form factors
- Field adjustable 3 level lumen outputs and 3 CCTs
- Wet, IC, and Air-tight rated



SELECTFIT G2

- 4", 6", 8" & 9.5" form factors
- Field adjustable 3 level lumen outputs and 5 CCTs
- DualDim for both 120V TRIAC/ELV and 0-10V dimming



NYX

- 4" & 6" sizes
- Field adjustable lumen and CCTs
- DualDim for both 120V Triac/ELV and 0-10V dimming



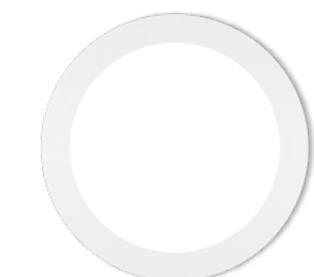
MULTIFIT

- Flat, Cloud, and Gimbal options
- 4", 6" and 8" sizes
- DualDim for both 120V Triac/ELV and 0-10V dimming



PXCYL CYLINDERS

- Elegant design with wide application use
- Five interchangeable beam angles
- Industry leading lumen selectable output up to 5,000lm



SLIMFIT SURFACE DOWNLIGHT

- 5", 7" and 9" sizes
- Deliver lumen output from 820lm to 1250lm for general lighting applications
- Five field selectable CCTs



EXTERIOR BUILDING

Outdoor lighting for data centers should prioritize security, efficiency, and durability. Bright, uniform illumination around perimeters, entrances, and parking areas helps deter unauthorized access. Weather-resistant, vandal-proof fixtures ensure reliability in harsh conditions, while long-lasting LEDs support 24/7 operations with minimal maintenance.



ULP

SKYLINE AREA & FLOOD (SA/SF)

- Specification Grade die-cast aluminum housing
- 5 Optical Distributions with Highest Uniformity in their product class
- 9 Different Optional Mounting Methods



ULP

SKYLINE WALL PACK

- Specification Grade die-cast aluminum housing
- Available in three sizes, delivering 1,000 to 24,000 lumens at up to 150 LPW
- Quick mount bracket enables hands-free wiring and simplifies installation



ULP

UNIFY WALL MOUNT

- Available in 3", 4" and 6" sizes
- Field selectable power output levels and CCTs
- Four different beam options
- Can be configured for direct-indirect, direct-only, or indirect-only lighting



ULP

VIEWPOINT WALL PACK (VWM)

- Full cutoff type 3 & 4 distributions
- CCT & lumen selectable (up to 14k lumens)
- Optional sensors and battery backups



ULP

VIEWPOINT AREA LIGHT (VA)

- Type 3, 4, & 5 distributions
- Lumen selectable from 14,000 to 42,000 lumens
- Adjustable Pole (Rd/Sq), Wall, or Slip-fitter mounting options



ULP

VIEWPOINT FLOOD (VF)

- 5 luminaire scales delivering 2,000-40,000 lumens
- CCT & lumen selectable (up to 14k lumens)
- Knuckle, Trunnion, Slip-Fitter, & Pole Mount Options

CONTROLS

Lighting controls play a critical role in enhancing energy efficiency, security, and operational flexibility in data centers. Advanced systems like occupancy sensors, daylight harvesting, and scheduling reduce energy consumption by ensuring lights are used only when needed. Dimming capabilities and automated adjustments minimize heat output, helping maintain stable conditions and reduce cooling demands. These controls also enhance safety by providing consistent illumination while enabling remote monitoring. By implementing smart lighting controls, data centers can optimize performance, lower costs, and support sustainability initiatives.

CONTROLS SOLUTIONS



- Easy Setup: Intuitive and user-friendly interface ensures a hassle-free setup process.
- Fixture Grouping: Effortlessly group your lighting fixtures for centralized control.
- Customizable Settings: Adjust brightness, color temperature, and more to create the perfect ambiance for any occasion.
- Scheduling: Set custom schedules to automate your lighting and enhance energy efficiency.
- Automation: Use advanced automation features to sync your lighting with daylight harvesting, occupancy sensing, and time scheduling.



- Economical grouping solution
- Occupancy & daylight functions
- Programmable with phone app
- Wireless scalable design
- No gateway required



- 2.4 GHz Wireless Mesh Network
- Occupancy, daylight, zone, scene, & scheduling control with optional energy monitoring
- Secure wireless scalable design
- Gateway for enhanced functionality



- Occupancy & RF solutions
- Occupancy, daylight, & demand response capabilities
- Wireless scalable design
- Vive HUB for enhanced functionality



- Athena wireless node is a radio frequency (RF) device that enables simple, digital control of individual light fixtures in an Athena control system.
- Enables individual wireless control of each fixture in an Athena control system.
- Accommodates zone and control changes without rewiring.
- All drivers on the link are controlled as a single zone. Provided with factory installed components only. Lutron Athena system provided by others.

EMERGENCY

Safety and security are essential for the lighting design of any data center space. In the event of a power outage, all spaces in the data center need a reliable, uninterrupted emergency lighting solution. Emergency drivers and inverters are ideal for providing backup power if an outage occurs.

EMERGENCY SOLUTIONS

ILP EXEM



- Full line of signs and lights for code compliance
- All products feature thermoplastic housings and LED lighting heads
- Standard and High Output available for varying mounting heights and spacings
- DOE and CEC registered

GREEN CREATIVE



- Multiple wattage selections from 5W to 24W
- Specifically designed to work with a wide variety of GREEN CREATIVE's lamps and fixtures
- Meets or exceeds all NEC and life safety code emergency lighting requirements
- CA Title 20 compliant version available
- Additional accessories options for various mounting methods

GREEN CREATIVE



- Can be used as either UL 924 listed emergency device or DLC listed UL Type B T8
- Constant power output in emergency mode for a minimum of 90 minutes
- Field selectable three color temperatures
- Continuous self-test design to ensure tube safety

EMERGENCY LIGHTING SOLUTIONS



- Emergency Drivers & Inverters (including Self-Diagnostic, High Efficacy, and Title 20 Compliant models)
- Dimming Transfer Devices
- Generator Transfer Switches
- Fire Alarm-Activated Relays & Dry Contact Interfaces
- Solutions compatible across multiple brands and luminaire platforms

**DATA
CENTER
APPLICATION
BROCHURE**



GREENCREATIVE

www.greencreative.com



www.ilp-inc.com

An ILLUMUS Brand

www.ILLUMUS.com