



# HOSPITALITY APPLICATION BROCHURE



CONTENT	
LOBBY & LOUNGE	1
RECEPTION	3
CORRIDORS & TRANSITION AREAS	5
GUEST ROOMS & SUITES	7
BATHROOMS	9
GYMNASIUMS & WELLNESS AREAS	11
DINING SPACES	13
MULTIPURPOSE ROOMS	15
OFFICES & ADMINISTRATION	17
STORAGE	19
CONTROLS	21
EMERGENCY	23





## **GREAT LIGHTING CREATES UNFORGETTABLE EXPERIENCES**

From check-in to check-out, the user journey in a hospitality setting must be flawless. Lighting design is an important, but often overlooked, part of that experience. The right light brings pleasure and purpose to each room. Whether the booking is for a frequent customer in town for a meeting or a couple on a weekend getaway, great lighting makes the stay unforgettable.

Flexibility and energy efficiency are key for proper illumination. Each space in a hotel has a different function; the proper lighting design must be chosen to suit the needs of the room. Luminaires in some rooms and hallways may stay on for long periods of time, resulting in higher energy costs and more frequent replacements. To overcome these obstacles, hotels need a wide assortment of long-lasting, energy-efficient lighting products.

GREEN CREATIVE offers LED lighting solutions for each aspect of the hospitality industry. Whether the guest is sipping coffee in the café, attending a conference in a multi-purpose room, enjoying a workout in the gym, or reading before bed, the right lighting product ensures visual comfort throughout the stay.





## LOBBY & LOUNGE

A hotel's lobby immediately informs the guest of the brand's identity. Good lighting creates an atmosphere that integrates with the space's features, furniture, and architecture. Lighting may shift depending on the time of day, and designs should be responsive enough to make use of natural light during the daytime and aesthetic lighting in the evenings.

## DECO LARGE FILAMENT SERIES



Deco large filament series from GREEN CREATIVE combines the timeless beauty of classic style or simplicity & elegance of modern style with the durability, reliability, and energy savings of advanced LED technology.

Either installed into an existing fixture or simply used as a stand alone fixture, these decorative light bulbs create a pleasant glow for a vintage or modern atmosphere. With unique spiral LED filament design inspired by incandescent bulbs, they fit flawlessly in any setting.

The deco large size filament series also best matches with our E26 base pendant light kit, offered in elegant golden finish or classic black finish.

These bulbs are 120V dimmable for individually customized illumination as well as more energy and cost savings. Full glass design, wet location rated and suitable for totally enclosed fixtures, the bulbs can be installed in various applications indoor or outdoor. Industry-leading long lifetime of 25,000 hours guarantee better durability and reliability.



### CCT SELECT A LAMPS

- Suitable to replace 60W, 75W, 100W incandescent lamps
- Provides comfortable, diffused light
- Dimmable with forward and reverse phase controls
- Field selectable CCTs



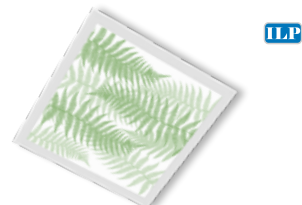
### REFINE MR LAMPS

- Suitable to replace up to a 75W halogen MR lamp
- Powered by TRUE CHROMA technology (95 CRI min)
- Smooth dimming with most electronic low-voltage dimming controls



### SPECFIT

- 4", 6", 8" & 9.5" form factors
- Adjustable lumen output
- TRUE CHROMA version available



### ENVI DESIGNER PANEL

- Lumen and CCT Selectable
- Various Lens Options
- Acrylic Drop Lens
- Acoustic Drop Panels



### DISCOVERY NARROW TROFFER (DNT)

- Sleek, compact and modern troffer
- Slim 4" lens width
- Grid, Flange, Surface & Skylight mounting options
- 1,000 to 12,000 Lumens
- 2', 4', & 8' Sizes



### PL LAMPS

- Replacements for fluorescent lamps from 7W - 42W
- Bases compatible with most fluorescent pin sockets
- Options for plug and play ballast install or wiring to line voltage
- Options for field selectable CCTs



### PXCYL

- 2", 4", 6", 8" sizes
- Comprehensive mounting options
- Industry leading lumen selectable output up to 5,000lm



### VOLUMETRIC TROFFER (VOLA)

- Architecturally designed volumetric troffer
- High efficacy - up to 151 lm/W for enhanced energy savings
- Advanced controls options for asset tracking

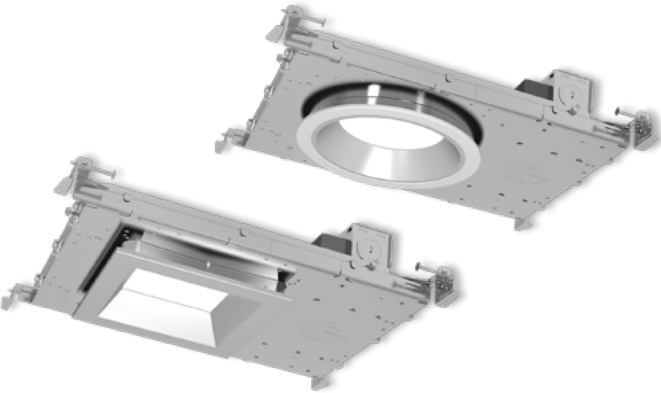




# RECEPTION

First impressions are made not by grand designs, but by subtle features. The details of a reception area’s lighting scheme can transform an experience. Guests may be distracted, irritable, or in a hurry, so these spaces should be designed to reassure, but also to get the job done. Task lighting as well as ambient lighting can make the front desk business as pleasant as any other experience during the guest’s stay.

## NYX NEW CONSTRUCTION



With integrated SelectDrive, SelectKelvin and DualDim technologies, abundant options of field installable accessories, and unique compact design, NYX revives customized downlighting design for any new construction project.



### PXCYL

- 2", 4", 6", 8" sizes
- Comprehensive mounting options
- Industry leading lumen selectable output up to 5,000lm



### SPECFIT

- 4", 6", 8" & 9.5" form factors
- Adjustable lumen output
- TRUE CHROMA version available



### SELECTFIT G2

- 4", 6", 8" & 9.5" form factors
- Field adjustable 3 level lumen outputs and 5 CCTs
- DualDim for both 120V TRIAC/ELV and 0-10V dimming



### REFINE MR LAMPS

- Suitable to replace up to a 75W halogen MR lamp
- Powered by TRUE CHROMA technology (95 CRI min)
- Smooth dimming with most electronic low-voltage dimming controls



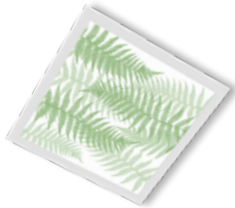
### ORBIT TRACK

- Specification grade & performance design
- Spot, narrow & flood interchangeable optics
- Industry leading lumen selectable output range



### REFINE PAR LAMPS

- Powered by TRUE CHROMA technology
- High color fidelity, balanced light distribution, and minimal glare
- Wide offering of CCTs, beam angles, and wattages



### ENVI DESIGNER PANEL

- Lumen and CCT Selectable
- Various Lens Options
- Acrylic Drop Lens
- Acoustic Drop Panels



### DISCOVERY LINEAR STRIP (DSC)

- Highly configurable spec grade strip
- No visible fasteners providing a smooth uninterrupted design
- Standard Efficacy (SE) and High Efficacy (HE) lumen packages
- 2', 4' & 8' lengths available



### DISCOVERY NARROW TROFFER (DNT)

- Sleek, compact and modern troffer
- Slim 4" lens width
- Grid, Flange, Surface & Skylight mounting options
- 1,000 to 12,000 Lumens
- 2', 4', & 8' Sizes



## CORRIDORS & TRANSITION AREA

Not to be ignored, hallways, stairwells, and other transition areas are meant to guide the guest through the hotel's user journey. There is often little natural light in these areas, yet they are important parts of the hotel's concept. Lighting may compliment artwork or highlight entrances and exits. Proper use of accent lighting, wall lighting, and sconces can create a layout that is uniform but not monotonous.

## CAVERN STAIRWELL (CV)



ILP's Cavern Stairwell luminaire provides a safe, robust and attractive design ideal for wall or ceiling mounting. As stairwells are unoccupied 90% throughout the day, fully control light levels for both occupied and unoccupied areas with high/low user selectable bi-level dimming options for maximum energy savings. Cavern's specification design, performance, housing lengths, finishes, sensor and emergency options make it the proper choice for stairwell illumination.



### PL LAMPS

- Replacements for fluorescent lamps from 7W - 42W
- Bases compatible with most fluorescent pin sockets
- Options for plug and play ballast install or wiring to line voltage
- Options for field selectable CCTs



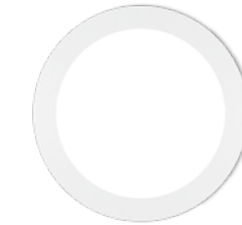
### T8 LAMPS

- Options for plug and play ballast install, line voltage wiring, or external driver, are available
- Options for replacing most linear fluorescent lamps
- Wide light emitting area



### SELECTFIT G2

- 4", 6", 8" & 9.5" form factors
- Field adjustable 3 level lumen outputs and 5 CCTs
- DualDim for both 120V TRIAC/ELV and 0-10V dimming



### SLIMFIT SURFACE DOWNLIGHT

- 5", 7" and 9" sizes
- Deliver lumen output from 820lm to 1250lm for general lighting applications
- Five field selectable CCTs



### CURVED WRAP (SQ)

- Sleek curved profile wrap fixture
- Suitable for installing in continuous runs
- 2', 4' & 8' lengths



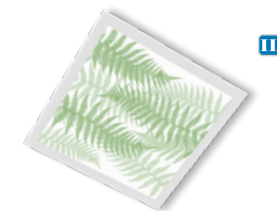
### DISCOVERY LINEAR STRIP (DSC)

- Highly configurable spec grade strip
- No visible fasteners providing a smooth uninterrupted design
- Standard Efficacy (SE) and High Efficacy (HE) lumen packages
- 2', 4' & 8' lengths available



### UTILITY WRAP (SWR)

- Sleek modern design
- Suitable for continuous run applications
- 2ft and 4ft configurations



### ENVI DESIGNER PANEL

- Lumen and CCT Selectable
- Various Lens Options
- Acrylic Drop Lens
- Acoustic Drop Panels



### VOLUMETRIC TROFFER (VOLA)

- Architecturally designed volumetric troffer
- High efficacy - up to 151 lm/W for enhanced energy savings
- Advanced controls options for asset tracking



## GUEST ROOMS & SUITES

Whether a first-time customer or a returning user, all guests expect comfort and peace. Lighting in guest rooms should generate feelings of relaxation, wellbeing, and privacy. Both budget hotels and high-end resorts can create feelings of luxury by giving guests control over their ambiance. Highly flexible and dimmable lighting options allow customers to create atmospheres that suit their unique moods.

## SPECFIT



SPECFIT downlight fixtures are a flexible, customizable solution for a variety of retail locations. From large spaces with high open ceilings to narrow hallways with a suspended grid ceiling, the SpecFit can easily provide the right combination of optical performance, energy savings, and advanced lighting control integration needed for retail spaces.



### CCT SELECT A LAMPS

- Suitable to replace 60W, 75W, 100W incandescent lamps
- Provides comfortable, diffused light
- Dimmable with forward and reverse phase controls
- Field selectable CCTs



### REFINE MR LAMPS

- Suitable to replace up to a 75W halogen MR lamp
- Powered by TRUE CHROMA technology (95 CRI min)
- Smooth dimming with most electronic low-voltage dimming controls



### SELECTFIT G2

- 4", 6", 8" & 9.5" form factors
- Field adjustable 3 level lumen outputs and 5 CCTs
- DualDim for both 120V TRIAC/ELV and 0-10V dimming



### ATOM TRACK

- Classic, minimalistic, cylindrical form factor
- CRI 90, 2700K, 3000K, 4000K CCTs
- Up to 1050 lumens in 25° or 35° beam angles



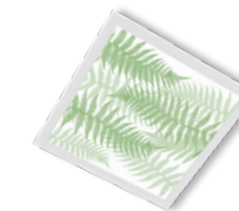
### SLIMFIT SURFACE DOWNLIGHT

- 5", 7" and 9" sizes
- Deliver lumen output from 820lm to 1250lm for general lighting applications
- Five field selectable CCTs



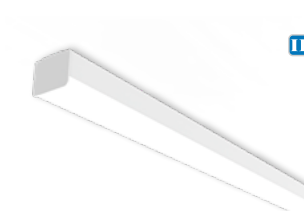
### SLIMDISK

- Only 7/8" below the ceiling
- Up to 1,000lm light output with high CRI 90
- Five field selectable CCTs



### ENVI DESIGNER PANEL

- Lumen and CCT Selectable
- Various Lens Options
- Acrylic Drop Lens
- Acoustic Drop Panels



### DISCOVERY LINEAR STRIP (DSC)

- Highly configurable spec grade strip
- No visible fasteners providing a smooth uninterrupted design
- Standard Efficacy (SE) and High Efficacy (HE) lumen packages
- 2', 4' & 8' lengths available



### DISCOVERY NARROW TROFFER (DNT)

- Sleek, compact and modern troffer
- Slim 4" lens width
- Grid, Flange, Surface & Skylight mounting options
- 1,000 to 12,000 Lumens
- 2', 4', & 8' Sizes





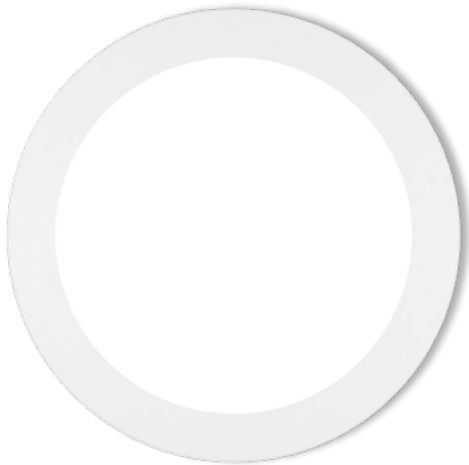
# BATHROOMS

While bathroom lighting is overlooked in many applications, in hospitality it is often a defining feature. Many guests book stays to enjoy a more luxurious decor than what they find at home. Accent lighting and fixtures with damp location ratings are preferred. Dimming functions give guests control, while occupancy sensors help hotels keep energy costs low.

## SLIMFIT SURFACE DOWNLIGHT



SLIMFIT  
SERIES



Available in 5", 7" and 9" sizes, SLIMFIT surface downlights deliver light output from 820lm to 1250lm for general lighting applications. Featured with SelectKelvin technology, SLIMFIT allows for easy selections of color temperatures in 2700K, 3000K, 3500K, 4000K and 5000K. High CRI 90 and 4-steps SDCM binning ensures superior color accuracy and consistency. The product is engineered for Air-Tight, IC Rated and Wet Location rated applications with easy installation.



### PL LAMPS

- Replacements for fluorescent lamps from 7W - 42W
- Bases compatible with most fluorescent pin sockets
- Options for plug and play ballast install or wiring to line voltage
- Options for field selectable CCTs



### FILASELECT LAMPS

- Rotating switch on the base
- Deliver light output from 800 - 1,050 lumens
- California Title 20 compliant



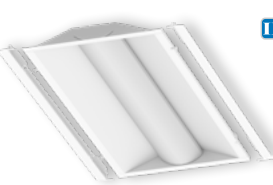
### MULTIFIT

- Flat, Cloud, and Gimbal options
- 4", 6" and 8" sizes
- DualDim for both 120V Triac/ELV and 0-10V dimming



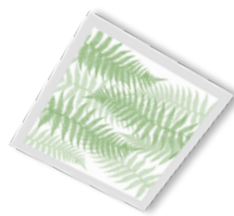
### SLIMDISK

- Only 7/8" below the ceiling
- Up to 1,000lm light output with high CRI 90
- Five field selectable CCTs



### TROFFER KIT (LANCE)

- Architecturally designed volumetric troffer retrofit kit
- High efficacy - up to 151 lm/W for enhanced energy savings
- Advanced controls options for asset tracking



### ENVI DESIGNER PANEL

- Lumen and CCT Selectable
- Various Lens Options
- Acrylic Drop Lens
- Acoustic Drop Panels



### DISCOVERY LINEAR STRIP (DSC)

- Highly configurable spec grade strip
- No visible fasteners providing a smooth uninterrupted design
- Standard Efficacy (SE) and High Efficacy (HE) lumen packages
- 2', 4' & 8' lengths available





## GYMNASIUMS & WELLNESS AREAS

Guests may use gyms and wellness areas to energize in the mornings or decompress in the evenings. Atmospheric lighting can create a sense of calm and warmth, while general lighting can highlight workout areas. Luminaires with low glare and a variety of options in color temperature are recommended. Waterproof fixtures are needed if products are installed near spas or swimming areas.

### PXCYL



SelectDrive



PXCYL is a versatile series of cylinder downlights with brilliant performance. Featured with SelectDrive technology, PXCYL allows for field selection of three lumen outputs with either 120V or 0-10V dimmable option. Field-interchangeable optical accessories let the user choose from five beam angles. PXCYL series of downlights offer comprehensive mounting choices, including surface, wall, wall up-light, pendant, suspension, and track suspension, available in four sizes. From artistic to purely utilitarian, the PXCYL is suitable for any commercial or residential application. PXCYL has been engineered to ensure color uniformity. Five color temperatures at 90 CRI are available, and a TRUE CHROMA option for 3000K models helps you meet the most stringent color fidelity requirements.



#### T8 LAMPS

- Options for plug and play ballast install, line voltage wiring, or external driver, are available
- Options for replacing most linear fluorescent lamps
- Wide light emitting area



#### HID FILAMENT

- Designed in classic ANSI HID form factor
- ED23, ED28 and ED32 sizes available
- For replacing 125W – 320W traditional HID bulbs



#### POWER AND CCT SELECT HID REPLACEMENT LAMPS

- Innovative locking cover to secure power and CCT settings after installation
- Field selectable CCT and light output levels
- Available in classic A21, A23 and PS30 bulb shapes



#### SLIMFIT SURFACE DOWNLIGHT

- 5", 7" and 9" sizes
- Deliver lumen output from 820lm to 1250lm for general lighting applications
- Five field selectable CCTs



#### SELECTFIT G2

- 4", 6", 8" & 9.5" form factors
- Field adjustable 3 level lumen outputs and 5 CCTs
- DualDim for both 120V TRIAC/ELV and 0-10V dimming



#### SPECFIT

- 4", 6", 8" & 9.5" form factors
- Adjustable lumen output
- TRUE CHROMA version available



#### ROUND HIGH BAY (RB5)

- Customizable illumination with CCT select and a variety of diffuser and reflector options
- IP65-rated, IK10 impact-resistant construction
- Simple installation with versatile mounting options



#### ENDEAVOUR HIGH BAY (EDV 2.0)

- Sleek curved polycarbonate end caps for polished look
- Uplight option to enhance full room illumination
- White & black housing options



#### EVEREST HIGH BAY (EVT 2.0)

- 12,000 to 60,000 Lumens
- CCT and Lumen Selectable Models
- Patent Pending Field Changeable Lenses
- 16", 30", 36" models

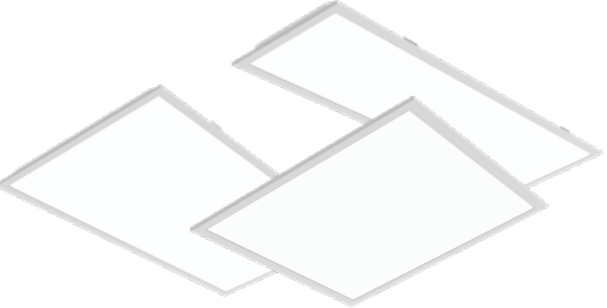




## DINING SPACES

Lighting in a hotel's dining space is as multifaceted as lighting in any restaurant or cafeteria. Whether food is served buffet-style or from a menu, authentic color rendering ensures that meals look appetizing. Designs should be adaptive enough to allow staff to rearrange seating areas and add tables. Kitchen lighting needs to be bright and unobtrusive to ensure safety.

## BACK LIT FLAT PANEL (VPAN SELECT)

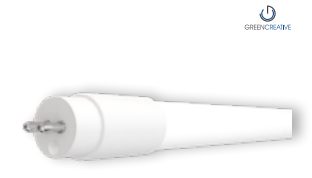


VPAN Select takes the ubiquitous Flat Panel luminaire to the next level with full selectability of lumen output and color temperature. It is the perfect solution for many troffer applications and the new selectability offers simplicity and SKU reduction opportunities. Designed with micro-optics that produce smooth and uniform low-glare illumination for optimal visual comfort. Its built-in tool-less field-selectable technology offers three lumen options and three CCT options offering elite versatility when needed most. With a depth under 2", VPAN's robust die-formed housing easily installs in shallow plenums with room to spare.



### T8 LAMPS

- Options for plug and play ballast install, line voltage wiring, or external driver, are available
- Options for replacing most linear fluorescent lamps
- Wide light emitting area



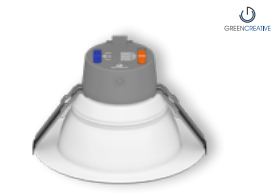
### T5 LAMPS

- Meets NSF requirements, plastic construction will not shatter
- Options for plug and play ballast install, line voltage wiring, or external driver, are available



### PXCYL

- 2", 4", 6", 8" sizes
- Comprehensive mounting options
- Industry leading lumen selectable output up to 5,000lm



### SELECTFIT G2

- 4", 6", 8" & 9.5" form factors
- Field adjustable 3 level lumen outputs and 5 CCTs
- DualDim for both 120V TRIAC/ELV and 0-10V dimming



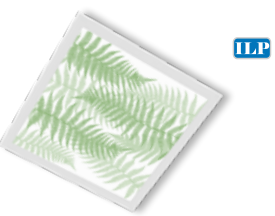
### DECO LARGE FILAMENTS

- Unique and abundant form factors
- Installed into a light fixture or simply used alone
- Optional golden or black E26 pendant light kit



### GRID FRAME HIGH BAY (GH)

- High performance recessed high bay
- Various lens options for aesthetics
- 2x2' & 2x4' sizes



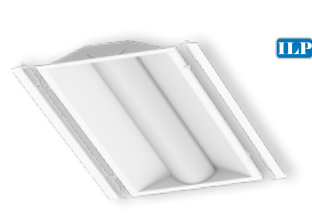
### ENVI DESIGNER PANEL

- Lumen and CCT Selectable
- Various Lens Options
- Acrylic Drop Lens
- Acoustic Drop Panels



### VOLUMETRIC TROFFER (VOLA)

- Architecturally designed volumetric troffer
- High efficacy - up to 151 lm/W for enhanced energy savings
- Advanced controls options for asset tracking



### TROFFER KIT (LANCE)

- Architecturally designed volumetric troffer retrofit kit
- High efficacy - up to 151 lm/W for enhanced energy savings
- Advanced controls options for asset tracking





## MULTIPURPOSE ROOMS

Many guests will spend the majority of their stay inside event rooms. It is important that these areas have positive energy to foster successful meetings and create lasting impressions. Lighting designs should incorporate flexibility for the variety of functions that will take place in these spaces. And as many of these rooms have high ceilings, fixtures with long lifetimes are recommended to reduce maintenance costs.

## PAR56 LAMP



The REFINE PAR56 lamp is designed with a proprietary GREEN CREATIVE driver which provides flicker free dimming performance with most forward and reverse phase controls. The REFINE optic maximizes the center beam candle power from our 90+ CRI light engine while eliminating glare. The heatsink design allows the lamp to be used in enclosed applications and still maintain a 50,000 hour lifetime. The REFINE PAR56 lamps will replace any GX16d base 300W-500W halogen lamp. The compatible PAR64 adapter ring is also available for easy retrofitting in PAR64 fixtures.



### NOVA TRACK LIGHT

- Wide and uniform lighting across expansive surfaces from top to bottom
- Field selectable CCT and lumen levels
- 360° rotating head and 90° pivot design



### PXCYL

- 2", 4", 6", 8" sizes
- Comprehensive mounting options
- Industry leading lumen selectable output up to 5,000lm



### SPECFIT

- 4", 6", 8" & 9.5" form factors
- Adjustable lumen output
- TRUE CHROMA version available



### ROUND HIGH BAY (RB5)

- Customizable illumination with CCT select and a variety of diffuser and reflector options
- IP65-rated, IK10 impact-resistant construction
- Simple installation with versatile mounting options



### VOLUMETRIC TROFFER (VOLA)

- Architecturally designed volumetric troffer
- High efficacy - up to 151 lm/W for enhanced energy savings
- Advanced controls options for asset tracking



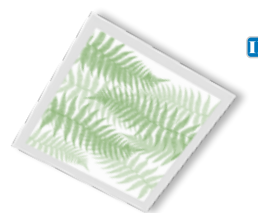
### DISCOVERY NARROW TROFFER (DNT)

- Sleek, compact and modern troffer
- Slim 4" lens width
- Grid, Flange, Surface & Skylight mounting options
- 1,000 to 12,000 Lumens
- 2', 4', & 8' Sizes



### GRID FRAME HIGH BAY (GH)

- High performance recessed high bay
- Various lens options for aesthetics
- 2x2' & 2x4' sizes



### ENVI DESIGNER PANEL

- Lumen and CCT Selectable
- Various Lens Options
- Acrylic Drop Lens
- Acoustic Drop Panels



### ENDEAVOUR HIGH BAY (EDV 2.0)

- Sleek curved polycarbonate end caps for polished look
- Uplight option to enhance full room illumination
- White & black housing options





## OFFICE & ADMINISTRATION

Office lighting in hospitality settings must be welcoming but highly functional. While these areas are not customer-facing, they are still places where employees must feel both productive and comfortable. A blend of task lighting and ambient lighting creates office areas that stimulate work but do not diverge from the hotel's identity.

## TRACK FAMILY SOLUTION



Select Drive

Select Kelvin



A track lighting family centered around meeting your hospitality lighting needs. With field-adjustable lumen outputs, multiple mounting options, a variety of beam angles, and an extensive suite of accessories and lenses, you can be sure that your application is getting the focus it deserves. GREEN CREATIVE also offers its own track system for your new construction or remodel applications.



### T8 LAMPS

- Options for plug and play ballast install, line voltage wiring, or external driver, are available
- Options for replacing most linear fluorescent lamps
- Wide light emitting area



### T5 LAMPS

- Meets NSF requirements, plastic construction will not shatter
- Options for plug and play ballast install, line voltage wiring, or external driver, are available



### PL LAMPS

- Replacements for fluorescent lamps from 7W - 42W
- Bases compatible with most fluorescent pin sockets
- Options for plug and play ballast install or wiring to line voltage
- Options for field selectable CCTs



### SELECTFIT G2

- 4", 6", 8" & 9.5" form factors
- Field adjustable 3 level lumen outputs and 5 CCTs
- DualDim for both 120V TRIAC/ELV and 0-10V dimming



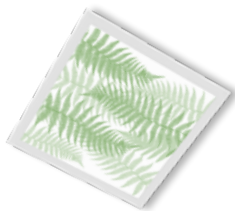
### SPECFIT

- 4", 6", 8" & 9.5" form factors
- Adjustable lumen output
- TRUE CHROMA version available



### PXCYL

- 2", 4", 6", 8" sizes
- Comprehensive mounting options
- Industry leading lumen selectable output up to 5,000lm



### ENVI DESIGNER PANEL

- Lumen and CCT Selectable
- Various Lens Options
- Acrylic Drop Lens
- Acoustic Drop Panels



### DISCOVERY LINEAR STRIP (DSC)

- Highly configurable spec grade strip
- No visible fasteners providing a smooth uninterrupted design
- Standard Efficacy (SE) and High Efficacy (HE) lumen packages
- 2', 4' & 8' lengths available



### DISCOVERY NARROW TROFFER (DNT)

- Sleek, compact and modern troffer
- Slim 4" lens width
- Grid, Flange, Surface & Skylight mounting options
- 1,000 to 12,000 Lumens
- 2', 4', & 8' Sizes

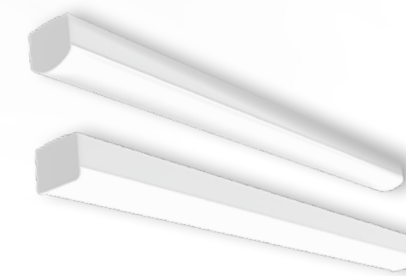


## STORAGE

Though less glamorous than other parts of a hotel, supply closets and equipment rooms still deserve smart lighting. Illumination here should be simple, bright, and robust. Storage areas may go unused most of the time, so luminaires with integrated motion sensors are often used.



## DISCOVERY LINEAR STRIP (DSC)



The Discovery Linear Strip is a highly configurable BAA spec grade strip luminaire. The injection-molded endcap smooth designs have no visible fasteners. The luminaire comes in three sizes (2', 4', 8'), vast lumen range and four different mounting options, catering to your project aesthetics, functionality, and flexibility. Available with a variety of compatible wireless grouping controls in order to cater to your space and maximize energy savings in the way you want.



### PL LAMPS

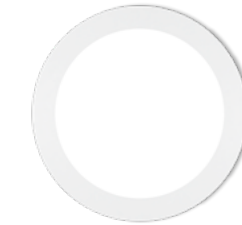
- Replacements for fluorescent lamps from 7W - 42W
- Bases compatible with most fluorescent pin sockets
- Options for plug and play ballast install or wiring to line voltage
- Options for field selectable CCTs

### T8 LAMPS

- Options for plug and play ballast install, line voltage wiring, or external driver, are available
- Options for replacing most linear fluorescent lamps
- Wide light emitting area

### INNOFIT PLUS

- 4", 6", 8" & 9.5" form factors
- Field adjustable 3 level lumen outputs and 3 CCTs
- Wet, IC, and Air-tight rated



### SLIMFIT SURFACE DOWNLIGHT

- 5", 7" and 9" sizes
- Deliver lumen output from 820lm to 1250lm for general lighting applications
- Five field selectable CCTs

### ENDEAVOUR HIGH BAY (EDV 2.0)

- Sleek curved polycarbonate end caps for polished look
- Uplight option to enhance full room illumination
- White & black housing options

### LINEAR STRIP (VS 3.0)

- 2.8" Width
- Lumen and CCT Selectable
- 2,000 to 12,000 Lumen
- 2', 4', & 8' Sizes



### UTILITY WRAP (SWR)

- Sleek modern design
- Suitable for continuous run applications
- 2ft and 4ft configurations

### CURVED WRAP (SQ)

- Sleek curved profile wrap fixture
- Suitable for installing in continuous runs
- 2', 4' & 8' lengths

### DISCOVERY NARROW TROFFER (DNT)

- Sleek, compact and modern troffer
- Slim 4" lens width
- Grid, Flange, Surface & Skylight mounting options
- 1,000 to 12,000 Lumens
- 2', 4', & 8' Sizes





## EXTERIOR LIGHTING

Outdoor lighting in hospitality facilities includes illumination of entrances, facades, and pathways. Designers should pay attention to IP ratings and choose luminaires which provide even light distribution for creating safe and welcoming atmosphere as well as accent the landscaping and architecture.

## SKYLINE AREA & FLOOD (SA/SF)



The Skyline's sleek aesthetic makes it perfectly-suited for warehouse area & flood applications. Designed for both new construction and retrofit, the Skyline provides a one-for-one solution for replacing legacy metal halide or high pressure sodium luminaires. Priced for payback, it's cost effective die-cast aluminum housings comes in 3-sizes and DLC Premium efficacies, making it the best choice for low acquisition cost and high energy savings. The highly configurable Skyline provides superior illumination, reliability, and ease of installation, exceeding most application requirements.



### SKYLINE WALL PACK

- Specification Grade die-cast aluminum housing
- Available in three sizes, delivering 1,000 to 24,000 lumens at up to 150 LPW
- Quick mount bracket enables hands-free wiring and simplifies installation



### VIEWPOINT AREA LIGHT (VA)

- Type 3, 4, & 5 distributions
- Lumen selectable from 14,000 to 42,000 lumens
- Adjustable Pole(Rd/Sq), Wall, or Slip-fitter mounting options



### VIEWPOINT FLOOD (VF)

- 5 luminaire scales delivering 2,000-40,000 lumens
- CCT & lumen selectable (up to 14k lumens)
- Knuckle, Trunnion, Slip-Fitter, & Pole Mount Options



### SLIM WALL PACK (SWP)

- Fully adjustable with 5 light levels & 2 sizes
- CCT Selectable (std), Lumen Selectable with FAO Device
- Battery Backup & PIR Sensor Options
- Adjustable Pole(Rd/Sq) or Wall mounting options



### VIEWPOINT WALL PACK (VWM)

- Full cutoff type 3 & 4 distributions
- CCT & lumen selectable (up to 14k lumens)
- Optional sensors and battery backups



### UNIFY WALL MOUNT

- Available in 3", 4" and 6" sizes
- Field selectable power output levels and CCTs
- Four different beam options
- Can be configured for direct-indirect, direct-only, or indirect-only lighting



### UFO PARKING / CANOPY (UFO)

- Visually comfortable illumination
- 10% uplight reduces cave effect
- Sensor & wireless controls ready



### BOLLARDS (BxT)

- 8" flat or dome top bollards
- Value driven, quick ROI
- Multiple beam patterns



### POLES & BRACKETS

- Straight round or square steel poles up to 40'
- Multiple bullhorn, wall, and wood pole mounting options
- Adapters for every site scenario





## CONTROLS

The ability to control your light makes all the difference. Quality dimming solutions allow operators to set the mood of a presentation or activity, or to save energy during daytime hours. Smart controls and occupancy sensors can further reduce electricity consumption, resulting in massive savings over the long term. We provide various integrated control solutions that meet building codes compliance for ASHRAE 90:1, Title 24, and similar standards.

## CONTROLS SOLUTIONS



- Easy Setup: Intuitive and user-friendly interface ensures a hassle-free setup process.
- Fixture Grouping: Effortlessly group your lighting fixtures for centralized control.
- Customizable Settings: Adjust brightness, color temperature, and more to create the perfect ambiance for any occasion.
- Scheduling: Set custom schedules to automate your lighting and enhance energy efficiency.
- Automation: Use advanced automation features to sync your lighting with daylight harvesting, occupancy sensing, and time scheduling.



- Economical grouping solution
- Occupancy & daylight functions
- Programmable with phone app
- Wireless scalable design
- No gateway required



- 2.4 GHz Wireless Mesh Network
- Occupancy, daylight, zone, scene, & scheduling control with optional energy monitoring
- Secure wireless scalable design
- Gateway for enhanced functionality



- Occupancy & RF solutions
- Occupancy, daylight, & demand response capabilities
- Wireless scalable design
- Vive HUB for enhanced functionality



- Athena wireless node is a radio frequency (RF) device that enables simple, digital control of individual light fixtures in an Athena control system.
- Enables individual wireless control of each fixture in an Athena control system.
- Accommodates zone and control changes without rewiring.
- All drivers on the link are controlled as a single zone. Provided with factory installed components only. Lutron Athena system provided by others.



## EMERGENCY

Safety and security are essential components of any building's lighting design. In the event of a power failure, hotels need reliable emergency lighting and path of egress solutions. Emergency lights and exit signs help identify the path of egress and ensure safe visibility. Emergency drivers and inverters are ideal solutions for greater illumination when outages occur.

## EMERGENCY SOLUTIONS



### GREEN CREATIVE



### GREEN CREATIVE



### EMERGENCY LIGHTING SOLUTIONS



- Full line of signs and lights for code compliance
- All products feature thermoplastic housings and LED lighting heads
- Standard and High Output available for varying mounting heights and spacings
- DOE and CEC registered



GREENCREATIVE

- Multiple wattage selections from 5W to 24W
- Specifically designed to work with a wide variety of GREEN CREATIVE's lamps and fixtures
- Meets or exceeds all NEC and life safety code emergency lighting requirements
- CA Title 20 compliant version available
- Additional accessories options for various mounting methods



GREENCREATIVE

- Can be used as either UL 924 listed emergency device or DLC listed UL Type B T8
- Constant power output in emergency mode for a minimum of 90 minutes
- Field selectable three color temperatures
- Continuous self-test design to ensure tube safety

- Emergency Drivers & Inverters (including Self-Diagnostic, High Efficacy, and Title 20 Compliant models)
- Dimming Transfer Devices
- Generator Transfer Switches
- Fire Alarm-Activated Relays & Dry Contact Interfaces
- Solutions compatible across multiple brands and luminaire platforms



# HOSPITALITY APPLICATION BROCHURE



GREENCREATIVE

[www.greencreative.com](http://www.greencreative.com)



[www.ilp-inc.com](http://www.ilp-inc.com)

An ILLUMUS Brand

[www.ILLUMUS.com](http://www.ILLUMUS.com)