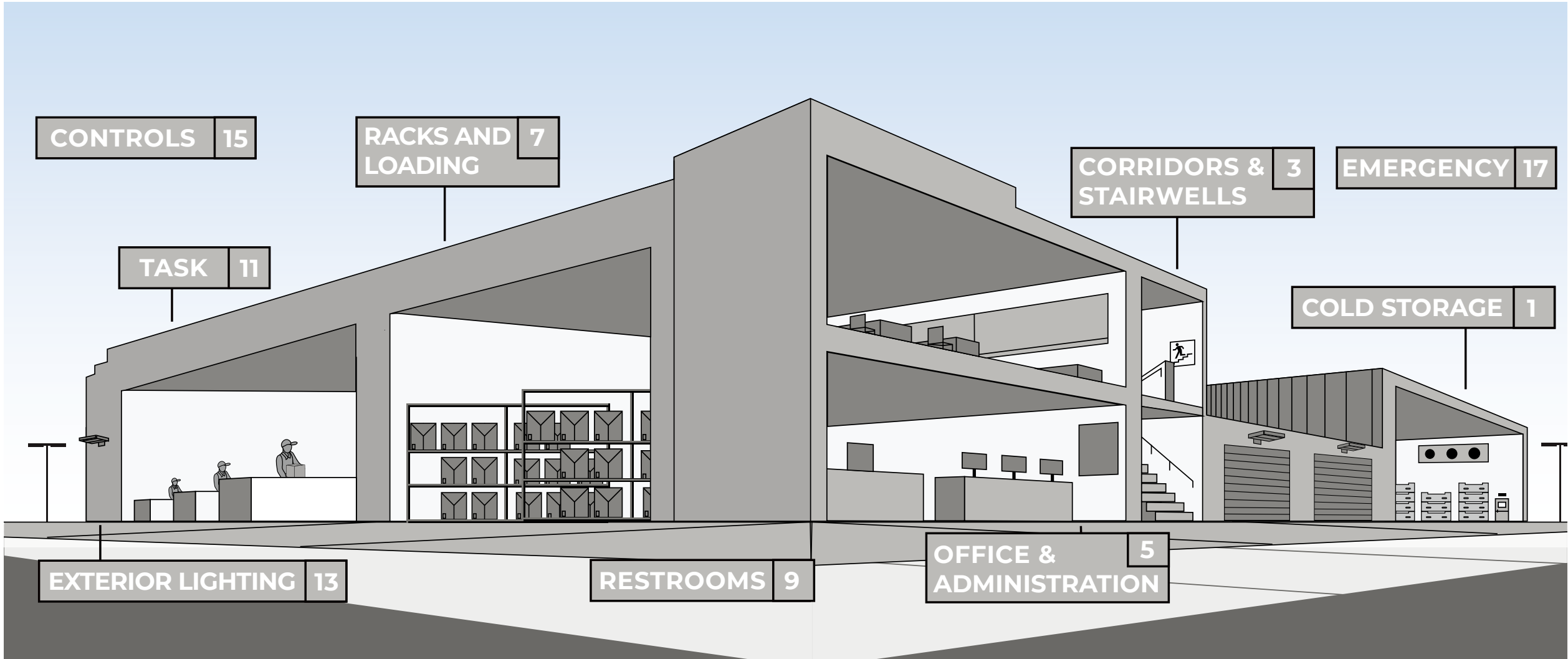




WAREHOUSE & DISTRIBUTION APPLICATION BROCHURE





CONTENT

COLD STORAGE	1
CORRIDORS & STAIRWELLS	3
OFFICE & ADMINISTRATION	5
PACKS AND LOADING	7
RESTROOMS	9
TASK	11
EXTERIOR LIGHTING	13
CONTROLS	15
EMERGENCY	17

RACKS AND LOADING

Lighting in warehouses and distribution areas tends to require high lumen outputs from hard-to-reach locations. LED lighting is an obvious choice for these areas, as operators enjoy massive energy savings and reduced maintenance costs. Often the first target for facility retrofits, users also benefit from the uniformity provided by LED fixtures.

ENDEAVOUR HIGH BAY (EDV 2.0)



Endeavour 2.0 is the linear high bay of the future. Sturdy - but sleek, it features an aluminum body with curved end caps in white, black or custom finishes to suit even the most unique project aesthetics. Endeavour 2.0 is built to withstand high abuse applications with an IK10 impact rating - the highest impact rating. Endeavour 2.0's uplight option provides enhanced full room illumination, while the high performance narrow and wide distribution optics provide superior horizontal or vertical light levels with excellent uniformity.



EVEREST HIGH BAY (EVT 2.0)

- 12,000 to 60,000 Lumens
- CCT and Lumen Selectable Models
- Patent Pending Field Changeable Lenses
- 16", 30", 36" models



BLIZZARD HIGH BAY (BL)

- Robust & durable wide body vapor tight high bay
- Extremely high efficacy up to 168 lm/W
- 2ft & 4ft fixture lengths



UTILITY WRAP (SWR)

- Sleek modern design
- Suitable for continuous run applications
- 2ft and 4ft configurations



SLIM STRIP (SS 3.0)

- 1.9" Width
- Lumen and CCT Selectable
- 2,000 to 12,000 Lumens
- 2', 4', & 8' Sizes



ROUND HIGH BAY (RB5)

- Customizable illumination with CCT select and a variety of diffuser and reflector options
- IP65-rated, IK10 impact-resistant construction
- Simple installation with versatile mounting options



T5 LAMPS

- Replacements for up to a 54W T5HO lamp
- Meets NSF requirements, plastic construction will not shatter
- Options for plug and play ballast install, line voltage wiring, or external driver, are available



T8 LAMPS

- Options for plug and play ballast install, line voltage wiring, or external driver, are available
- Options for replacing most linear fluorescent lamps
- Wide light emitting area



HID FILAMENT

- Designed in classic ANSI HID form factor
- ED23, ED28 and ED32 sizes available
- For replacing 125W - 320W traditional HID bulbs



POWER AND CCT SELECT HID REPLACEMENT LAMPS

- Innovative locking cover to secure power and CCT settings after installation
- Field selectable CCT and light output levels
- Available in classic A21, A23 and PS30 bulb shapes



COLD STORAGE

LED technology is ideal for freezers and refrigerated areas. Compared with incandescent or fluorescent lamps, LEDs emit a fraction of the heat and surpass both in terms of performance and product lifespan in cold temperatures. The benefits are reduced strain on cooling systems and reliable lighting in critical cold storage areas.

NARROW LINEAR VAPOR TIGHT (WTZ)



WTZ Series is an industry leading vapor tight luminaire robustly designed for a wide variety of environments. Its sealed and gasketed NSF listed fiberglass enclosure is easy to service and clean, ideal for maintaining a safe environment for food and beverage processing. With an enhanced feature set including industry leading ambient operating temperatures, extremely high efficiency, three scalable fixture lengths, wide lumen range, various high impact lens options and multiple mounting options make the WTZ Series the absolute luminaire for any vapor tight application.



ROUND HIGH BAY (RB5)

- Customizable illumination with CCT select and a variety of diffuser and reflector options
- IP65-rated, IK10 impact-resistant construction
- Simple installation with versatile mounting options



BLIZZARD HIGH BAY (BL)

- Robust & durable wide body vapor tight high bay
- Extremely high efficacy up to 168 lm/W
- 2ft & 4ft fixture lengths



X SERIES VAPOR TIGHT (WTX)

- Sealed & gasketed vapor tight
- Unique light bar technology
- Slim profile 4' & 8' lengths



VAPOR TIGHT (VVT 2.0)

- Impact-resistant narrow linear vapor tight
- 5VA flame-rated polycarbonate housing, IP65 rated
- Lumen and CCT Selectable
- 3,000 to 12,000 lumens
- 2', 4' & 8' Sizes



VAPOR TIGHT RETROFIT KIT (VTR)

- Easy upgrade to LED
- Long list of compatible luminaires
- Installs in 4' or 8' housing in 5 mins or less



VAPOR TIGHT HB RETROFIT (BLR)

- Easy upgrade to LED
- Long list of compatible luminaires
- Installs in 4' housing in 5 mins or less



ENDEAVOUR HIGH BAY (EDV 2.0)

- Sleek curved polycarbonate end caps for polished look
- Uplight option to enhance full room illumination
- White & black housing options

CORRIDORS & STAIRWELLS

Industrial stairwells, corridors, and walkways have unique lighting needs. Fixtures may have low mounting heights or need to be installed in awkward corners or areas exposed to the elements. Low-profile, robust, and easy-to-install solutions are recommended for these applications.

CAVERN STAIRWELL (CV)



ILP's Cavern Stairwell luminaire provides a safe, robust and attractive design ideal for wall or ceiling mounting. As stairwells are unoccupied 90% throughout the day, fully control light levels for both occupied and unoccupied areas with high/low user selectable bi-level dimming options for maximum energy savings. Cavern's specification design, performance, housing lengths, finishes, sensor and emergency options make it the proper choice for stairwell illumination.



DISCOVERY LINEAR STRIP (DSC)

- Highly configurable spec grade strip
- No visible fasteners providing a smooth uninterrupted design
- Standard Efficacy (SE) and High Efficacy (HE) lumen packages
- 2', 4' & 8' lengths available



VOLUMETRIC SELECTABLE TROFFER (VST)

- Volumetric design
- Lumen & CCT selectable
- 1x4', 2x2' & 2x4' sizes



TROFFER KIT (LANCE)

- Architecturally designed volumetric troffer retrofit kit
- High efficacy - up to 151 lm/W for enhanced energy savings
- Advanced controls options for asset tracking



UTILITY WRAP (SWR)

- Sleek modern design
- Suitable for continuous run applications
- 2ft and 4ft configurations



VOLUMETRIC TROFFER (VOLA)

- Architecturally designed volumetric troffer
- High efficacy - up to 151 lm/W for enhanced energy savings
- Advanced controls options for asset tracking



CURVED WRAP (SQ)

- Sleek curved profile wrap fixture
- Suitable for installing in continuous runs
- 2', 4' & 8' lengths



T8 LAMPS

- Options for plug and play ballast install, line voltage wiring, or external driver, are available
- Options for replacing most linear fluorescent lamps
- Wide light emitting area



CCT SELECT PINFIT

- Patented modular socket design allows for easy switch from G24q to G24d
- Field selectable three color temperatures
- Suitable for electronic ballast, magnetic ballast, or no ballast environment



SELECTFIT G2

- 4", 6", 8" & 9.5" form factors
- Field adjustable 3 level lumen outputs and 5 CCTs
- DualDim for both 120V TRIAC/ELV and 0-10V dimming

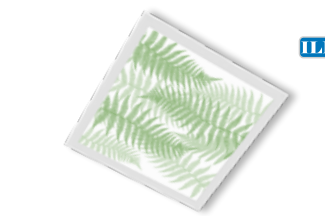
OFFICE & ADMINISTRATION

Just as important as the machine processes in industrial facilities is the work that happens in the offices and administration areas. Whether the goal is increasing working efficiency or creating a positive work environment, a well-designed lighting system helps employees focus on critical tasks and improves overall well-being.

ORBIT TRACK LIGHT



With a variety of mounting options, field-interchangeable TIR optics, snap-in light diffusion accessories, and customizable ordering options, GREEN CREATIVE's new track light is useful in almost any track lighting application. The ORBIT is a compact, lightweight, and robust U.S.-assembled solution which enjoys a 50,000-hour L70 lifetime rating. Select between low and high lumen outputs using the SelectDrive switch on the back of the fixture.



ENVI DESIGNER PANEL

- Lumen and CCT Selectable
- Various Lens Options
- Acrylic Drop Lens
- Acoustic Drop Panels



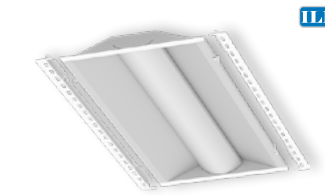
DISCOVERY NARROW TROFFER (DNT)

- Sleek, compact and modern troffer
- Slim 4" lens width
- Grid, Flange, Surface & Skylight mounting options
- 1,000 to 12,000 Lumens
- 2', 4', & 8' Sizes



VOLUMETRIC TROFFER (VOLA)

- Architecturally designed volumetric troffer
- High efficacy - up to 151 lm/W for enhanced energy savings
- Advanced controls options for asset tracking



TROFFER KIT (LANCE)

- Architecturally designed volumetric troffer retrofit kit
- High efficacy - up to 151 lm/W for enhanced energy savings
- Advanced controls options for asset tracking



T8 LAMPS

- Options for plug and play ballast install, line voltage wiring, or external driver, are available
- Options for replacing most linear fluorescent lamps
- Wide light emitting area



T5 LAMPS

- Meets NSF requirements, plastic construction will not shatter
- Options for plug and play ballast install, line voltage wiring, or external driver, are available



CCT SELECT PINFIT

- Patented modular socket design allows for easy switch from G24q to G24d
- Field selectable three color temperatures
- Suitable for electronic ballast, magnetic ballast, or no ballast environment



SELECTFIT G2

- 4", 6", 8" & 9.5" form factors
- Field adjustable 3 level lumen outputs and 5 CCTs
- DualDim for both 120V TRIAC/ELV and 0-10V dimming



SPECFIT

- 4", 6", 8" & 9.5" form factors
- Adjustable lumen output
- TRUE CHROMA version available



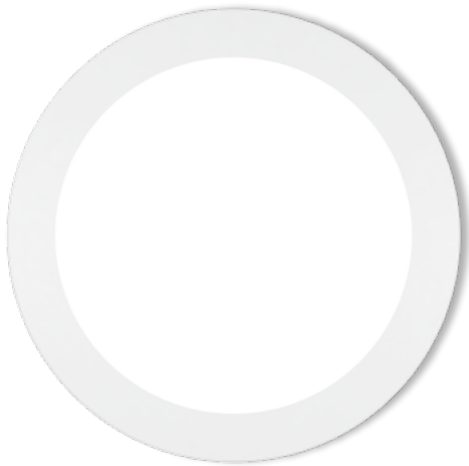
RESTROOMS

Whether you choose ambient light, accent light, or a mixture of both, washrooms in industrial spaces should be safe and hygienic. Ensure that the room is well-lit, especially in corners and along walls. High-quality occupancy sensors work well in restrooms, helping facilities save on energy bills.

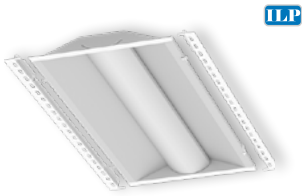
SLIMFIT SURFACE DOWNLIGHT



SLIMFIT
SERIES



Available in 5", 7" and 9" sizes, SLIMFIT surface downlights deliver light output from 820lm to 1250lm for general lighting applications. Featured with SelectKelvin technology, SLIMFIT allows for easy selections of color temperatures in 2700K, 3000K, 3500K, 4000K and 5000K. High CRI 90 and 4-steps SDCM binning ensures superior color accuracy and consistency. The product is engineered for Air-Tight, IC Rated and Wet Location rated applications with easy installation.



TROFFER KIT (LANCE)

- Architecturally designed volumetric troffer retrofit kit
- High efficacy - up to 151 lm/W for enhanced energy savings
- Advanced controls options for asset tracking



VOLUMETRIC TROFFER (VOLA)

- Architecturally designed volumetric troffer
- High efficacy - up to 151 lm/W for enhanced energy savings
- Advanced controls options for asset tracking



VAPOR TIGHT (VVT 2.0)

- Impact-resistant narrow linear vapor tight
- 5VA flame-rated polycarbonate housing, IP65 rated
- Lumen and CCT Selectable
- 3,000 to 12,000 lumens
- 2', 4' & 8' Sizes



BACK LIT FLAT PANEL (VPAN SELECT)

- Lumen selectable output
- Three selectable CCTs
- Low profile design
- 1x4', 2x2' & 2x4' sizes



DISCOVERY LINEAR STRIP (DSC)

- Highly configurable spec grade strip
- No visible fasteners providing a smooth uninterrupted design
- Standard Efficacy (SE) and High Efficacy (HE) lumen packages
- 2', 4' & 8' lengths available



CCT SELECT A LAMPS

- Suitable to replace 60W, 75W, 100W incandescent lamps
- Provides comfortable, diffused light
- Dimmable with forward and reverse phase controls
- Field selectable CCTs



CCT SELECT BR LAMPS

- Suitable to replace up to 85W incandescent lamps
- Provides comfortable, diffused light
- Dimmable with forward and reverse phase controls
- Five field selectable CCTs



T8 LAMPS

- Options for plug and play ballast install, line voltage wiring, or external driver, are available
- Options for replacing most linear fluorescent lamps
- Wide light emitting area



SLIMDISK

- Only 7/8" below the ceiling
- Up to 1,000lm light output with high CRI 90
- Five field selectable CCTs



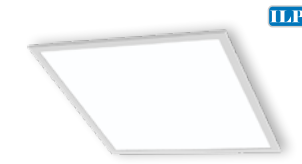
TASK

In addition to overhead lighting, industrial processes may require extra lighting for tooling or assembly work. These lights tend to have high lumen outputs and low mounting heights. Additionally, they often need to withstand sprays, debris, and impacts.

SLIM STRIP (SS 3.0)

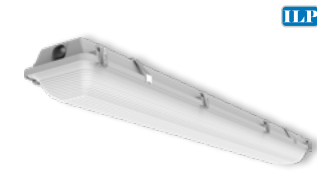


The SS 3.0 slim strip provides a modern and architectural design that can be ceiling, wall and suspension mounted. With a sleek ultra slim 1.9" width, multiple lengths, and low acquisition cost, the SS 3.0 slim strip provides versatility and energy savings desired for new construction and retrofit applications.



BACK LIT FLAT PANEL (VPAN SELECT)

- Lumen selectable output
- Three selectable CCTs
- Low profile design
- 1x4', 2x2' & 2x4' sizes



NARROW LINEAR VAPOR TIGHT (WTZ)

- Sealed and gasketed vapor tight
- Durable construction for harshest environments
- 2', 4' & 8' lengths



CURVED WRAP (SQ)

- Sleek curved profile wrap fixture
- Suitable for installing in continuous runs
- 2', 4' & 8' lengths



VAPOR TIGHT (VVT 2.0)

- Impact-resistant narrow linear vapor tight
- 5VA flame-rated polycarbonate housing, IP65 rated
- Lumen and CCT Selectable
- 3,000 to 12,000 lumens
- 2', 4' & 8' Sizes



LINEAR STRIP (VS 3.0)

- 2.8" Width
- Lumen and CCT Selectable
- 2,000 to 12,000 Lumen
- 2', 4', & 8' Sizes



DISCOVERY LINEAR STRIP (DSC)

- Highly configurable spec grade strip
- No visible fasteners providing a smooth uninterrupted design
- Standard Efficacy (SE) and High Efficacy (HE) lumen packages
- 2', 4' & 8' lengths available



T8 LAMPS

- Options for plug and play ballast install, line voltage wiring, or external driver, are available
- Options for replacing most linear fluorescent lamps
- Wide light emitting area



T8 UEB LAMPS

- For both single ended and double ended bypass installations
- UL Type B - work off 120-277V line voltage
- 2', 3' and 4' lengths available
- Work with existing shunted or non-shunted lamp holders



T5 LAMPS

- Replacements for up to a 54W T5HO lamp
- Meets NSF requirements, plastic construction will not shatter
- Options for plug and play ballast install, line voltage wiring, or external driver, are available



EXTERIOR LIGHTING

Outdoor lighting in industrial areas should prioritize safety and efficiency. Applications range from brightening parking lots and loading bays to illuminating signage and outdoor catwalks. And because many facilities are open 24/7, it is critical that these lights have the highest possible lifetime ratings.

SKYLINE AREA & FLOOD (SA/SF)



The Skyline's sleek aesthetic makes it perfectly-suited for warehouse area & flood applications. Designed for both new construction and retrofit, the Skyline provides a one-for-one solution for replacing legacy metal halide or high pressure sodium luminaires. Priced for payback, it's cost effective die-cast aluminum housings comes in 3-sizes and DLC Premium efficacies, making it the best choice for low acquisition cost and high energy savings. The highly configurable Skyline provides superior illumination, reliability, and ease of installation, exceeding most application requirements.



SKYLINE WALL PACK

- Specification Grade die-cast aluminum housing
- Available in three sizes, delivering 1,000 to 24,000 lumens at up to 150 LPW
- Quick mount bracket enables hands-free wiring and simplifies installation



VIEWPOINT AREA LIGHT (VA)

- Type 3, 4, & 5 distributions
- Lumen selectable from 14,000 to 42,000 lumens
- Adjustable Pole(Rd/Sq), Wall, or Slip-fitter mounting options



VIEWPOINT FLOOD (VF)

- 5 luminaire scales delivering 2,000-40,000 lumens
- CCT & lumen selectable (up to 14k lumens)
- Knuckle, Trunnion, Slip-Fitter, & Pole Mount Options



VIEWPOINT WALL PACK (VWM)

- Full cutoff type 3 & 4 distributions
- CCT & lumen selectable (up to 14k lumens)
- Optional sensors and battery backups



SLIM WALL PACK (SWP)

- Fully adjustable with 5 light levels & 2 sizes
- CCT color selectable
- Optional sensors and battery backups



OW SERIES WALL PACK (OW)

- 3 luminaire scales delivering 1,000-16,000 lumens
- CCT & lumen selectable
- Integral battery backups available



VIEWPOINT CANOPY (VCx)

- Available in 2 sizes and 6 lumen outputs from 3,000 – 14,000
- Retrofit solution for traditional HID sources up to 400W
- CCT selectable (30K/40K/50K)



VAPOR TIGHT (VVT 2.0)

- Impact-resistant narrow linear vapor tight
- 5VA flame-rated polycarbonate housing, IP65 rated
- Lumen and CCT Selectable
- 3,000 to 12,000 lumens
- 2', 4' & 8' Sizes



POLES & BRACKETS

- Straight square steel poles up to 40'
- Multiple bullhorn, wall, and wood pole mounting options
- Adapters for every site scenario

CONTROLS

The ability to control your light makes all the difference. Quality dimming solutions allow operators to set the mood of activity or to save energy during daytime hours. Smart controls and occupancy sensors can further reduce electricity consumption, resulting in massive savings over the long term. We provide various integrated control solutions that meet building codes compliance for ASHRAE 90:1, Title 24, etc.

CONTROLS SOLUTIONS

EMERGENCY

Safety and security are essential components of any building's lighting design. In the event of a power failure, industrial spaces need a reliable emergency lighting solution. Emergency Drivers and Inverters are ideal for providing backup power if an outage occurs.

EMERGENCY SOLUTIONS



NUROAir®
Bluetooth Controls
POWERED BY ILLUMUS, BRANDS

- Easy Setup: Intuitive and user-friendly interface ensures a hassle-free setup process.
- Fixture Grouping: Effortlessly group your lighting fixtures for centralized control.
- Customizable Settings: Adjust brightness, color temperature, and more to create the perfect ambiance for any occasion.
- Scheduling: Set custom schedules to automate your lighting and enhance energy efficiency.
- Automation: Use advanced automation features to sync your lighting with daylight harvesting, occupancy sensing, and time scheduling.



ES
EasySense

- Economical grouping solution
- Occupancy & daylight functions
- Programmable with phone app
- Wireless scalable design
- No gateway required



synapse

- Bluetooth technology allows for grouping and scheduling with ease
- Compatible both indoors and outdoors
- Easy integration into existing BMS systems supporting all scales of projects with a cloud-based structure



vive
by LUTRON

- Occupancy & RF solutions
- Occupancy, daylight, & demand response capabilities
- Wireless scalable design
- Vive PowPak Dimming Module with 0-10 V



LUTRON

- Athena wireless node is a radio frequency (RF) device that enables simple, digital control of individual light fixtures in an Athena control system.
- Enables individual wireless control of each fixture in an Athena control system.
- Accommodates zone and control changes without rewiring.
- All drivers on the link are controlled as a single zone. Provided with factory installed components only. Lutron Athena system provided by others.

ILP EXEM



ILP

EXEM
EXIT & EMERGENCY

- Full line of signs and lights for code compliance
- All products feature thermoplastic housings and LED lighting heads
- Standard and High Output available for varying mounting heights and spacings
- DOE and CEC registered



GREENCREATIVE

- Multiple wattage selections from 5W to 24W
- Specifically designed to work with a wide variety of GREEN CREATIVE's lamps and fixtures
- Meets or exceeds all NEC and life safety code emergency lighting requirements
- CA Title 20 compliant version available
- Additional accessories options for various mounting methods



GREENCREATIVE

- Can be used as either UL 924 listed emergency device or DLC listed UL Type B T8
- Constant power output in emergency mode for a minimum of 90 minutes
- Field selectable three color temperatures
- Continuous self-test design to ensure tube safety



- Emergency Drivers & Inverters (including Self-Diagnostic, High Efficacy, and Title 20 Compliant models)
- Dimming Transfer Devices
- Generator Transfer Switches
- Fire Alarm-Activated Relays & Dry Contact Interfaces
- Solutions compatible across multiple brands and luminaire platforms

WAREHOUSE & DISTRIBUTION APPLICATION BROCHURE



GREENCREATIVE

www.greencreative.com



www.ilp-inc.com

An ILLUMUS Brand

www.ILLUMUS.com