

OW SERIES WALL PACK



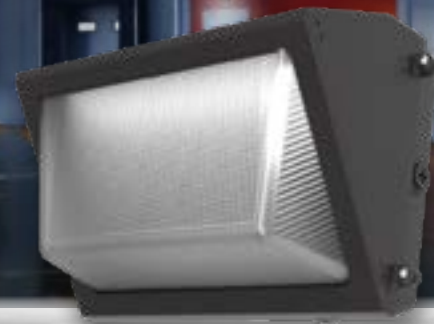
OWS

1,000 – 4,000 Lumens



OWM

3,000 – 5,000 Lumens



OWL

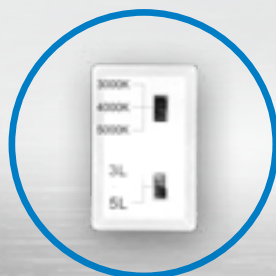
5,000 – 16,000 Lumens

OPEN FACE WALL PACKS

Introducing: the OW Series Open Face Wall Pack. With high performance distributions and an economical design, the OW series is the perfect choice to fulfill your application needs while saving you energy – and money. It provides versatility at your fingertips with both lumen and CCT selectable standard features, offering 33 standard configurations in four SKUs. The prismatic lens that comes standard with the luminaire helps to spread light while softening it to the eye, enhancing safety and security while improving site aesthetics.

LUMEN AND CCT-SELECTABLE

The OW Series features an integrated knob within the fixture that allows you to select CCT and lumen output in the field.

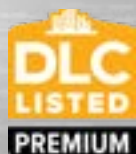
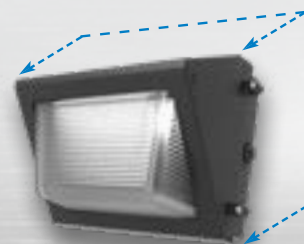


KEY FEATURES

- Replaces 70W to 750W Metal Halide
- CCT and Lumen Selectable
- 3000K, 4000k, and 5000k CCTs
- 1,000 – 16,000 Lumens with up to 148 LPW
- 120–277V Universal Voltage or 347V–480V High Voltage
- Impact-Resistant Borosilicate Glass Lens Reduces Glare and Provides Uniform Distribution
- Options For Battery Backups, Photocell, Sensors and Additional Surge Protection
- L70>100,000 Hours Providing Over a 20-Year Service Life
- -40°F-113°F Ambient Temperature Range
- Three 1/2" Conduit Entries (On Sides and Top)
- Bubble Level or Easy Installation

COVER EXISTING WALL FOOTPRINT

With its traditional form, the OW covers the footprint (and any remaining stains) of a typical HID wall pack.





STOCKING & ORDERING MADE EASY



OWS

- 1L/2L/4L
- 3K/4K/5K Selectable
- Photocell Standard
- 2.5kV Surge Protection
- Bronze Poly/ Aluminum Housing
- Poly Lens



OWM

- 3L/5L
- 3K/4K/5K Selectable
- Photocell Optional
- 6kV Surge Protection
- Bronze Powder Coat Die Cast Aluminum Housing
- Borosilicate Glass Lens



OWL

- 5L/8L/10L Or 10L/13L/16L
- 3K/4K/5K Selectable
- Photocell Optional
- 6kV Surge Protection
- Bronze Powder Coat Die Cast Aluminum Housing
- Borosilicate Glass Lens

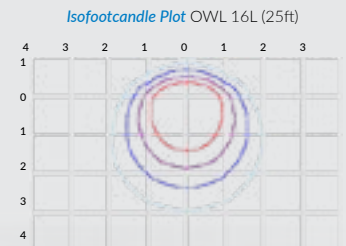
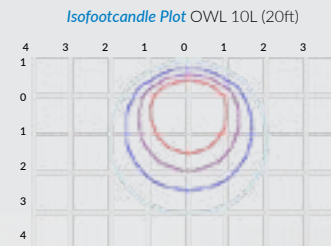
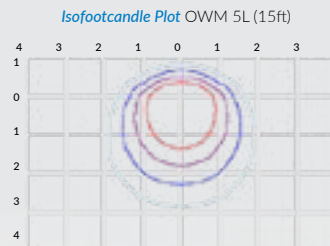
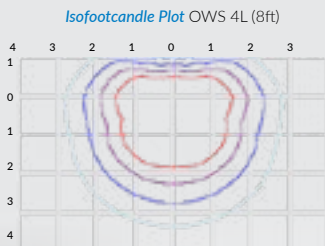
11 Different Lumen Outputs | 3 CCTs | ONLY 4 SKUS

STOCK ORDERING INFORMATION [UPC Code Table](#), [Pallet Quantity](#)
[Accessories](#) | [Visors](#) | [Photocell](#) | [Beauty Plates](#)



HIGH PERFORMANCE

■ 2 fc ■ 1 fc ■ 0.5 fc ■ 0.25 fc Distance in units of mount height



Fixture	Lumen Package	8' Mounting Height		15' Mounting Height		20' Mounting Height		25' Mounting Height		35' Mounting Height	
		AVG FC	Spacing (x&y)	AVG FC	Spacing (x&y)	AVG FC	Spacing (x&y)	AVG FC	Spacing (x&y)	AVG FC	Spacing (x&y)
OWS	2L	5.2	17'	3	20'	2	23'	1.5	25'	NA	NA
	4L	6.3	19'	3.1	25'	2.5	26'	1.9	29'	NA	NA
OWM	3L	4.6	21'	2.8	25'	2.1	27'	1.7	27'	NA	NA
	5L	5.9	23'	3.3	28'	2.5	30'	2.2	30'	NA	NA
OWL	8L	NA	NA	3.9	32'	3.2	34'	2.6	36'	1.9	38'
	10L	NA	NA	4.4	37'	3.4	40'	3	42'	2.2	44'
	13L	NA	NA	5.1	39'	3.9	43'	3.1	47'	2.3	50'
	16L	NA	NA	5.2	41'	4.3	44'	3.6	47'	2.7	50'

* All have minimum of 1FC

SUITABLE APPLICATIONS

Pathways Building Entrances Vehicle Ramps Schools
 Tunnels Stairways Loading Docks Public Areas