



# SKYLINE

## AREA LIGHT

### PERFORMANCE, DELIVERED

The sleek aesthetic of the Skyline Series makes it perfectly suited for a wide variety of specification or commercial lighting applications. Designed for both new construction and retrofit, the Skyline provides a one-for-one solution for replacing legacy metal halide or high-pressure sodium luminaires while providing industry leading uniformity and application targeted performance. Priced for a quick ROI, it's cost-effective diecast aluminum housings comes in 2-sizes and DLC Premium efficacies with up to 165 LPW, making it the best choice for low acquisition cost and high energy savings. The highly configurable Skyline series provides superior illumination, reliability, and ease of installation, exceeding most application requirements.

### KEY FEATURES

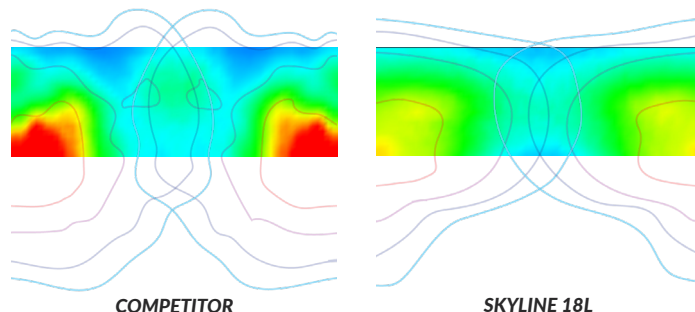
- 2 Sizes Delivering 6,000 - 42,000 Lumens
- Specification Grade Die-cast Aluminum Housing
- 5 Rotatable Optical Distributions with Highest Uniformity in its Product Class
- Optional Back/Spill Light Control via Field Installable Integral Shield (HSS)
- 9 Different Mounting Methods (3G Rated)
- High Efficacy - Up to 165 LPW
- Replaces 70W - 1000W HID Luminaires while saving up to 80% in energy
- 3,000K, 4,000K, & 5,000K CCT
- Proudly Assembled in America
- Occupancy, Daylight Harvesting/Photocell, and Sensor Ready Wireless Control Luminaire Options
- DesignLights Consortium® Premium Qualified Luminaire



### HIGHEST UNIFORMITY IN ITS CLASS!

- Higher Uniformity & Coverage
- Better Backlight Control
- No Wasteful Hot Spot
- 70% Energy Savings

#### 400W HID COMPETITOR VS. SKYLINE 18L



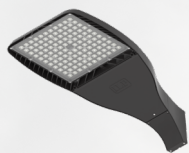
### SUITABLE APPLICATIONS

- Parking Lots
- Car Dealerships
- Parking Structures
- Distribution Centers
- Education
- Parks
- Roadways
- Shopping Centers
- Warehouses

## QUICK FACTS

- 120 - 277V or 347 - 480V
- L80>100K Hrs Calculated per TM-21-19
- 6kV Surge Standard
- -40°C to 50°C Operating Temperature
- 0-10 Dimming Driver Standard
- IP66 Rated Luminaire
- ARRA Compliant
- BAA Compliant
- Dark Sky Compliant
- Five Year Limited Warranty
- Ten Year Optional Warranty

## WIDE VARIETY OF MOUNTING METHODS



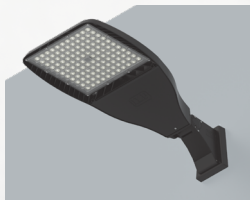
**UMB**

Universal Mounting Bracket  
(Round or Square Pole)



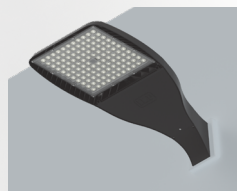
**UAB**

Universal Adjustable Mount Bracket  
(Round or Square Pole)



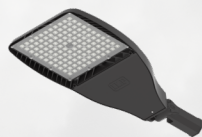
**WAM**

Wall Adjustable Mount Bracket



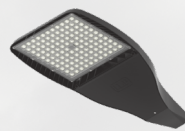
**WMB**

Wall Mount Bracket



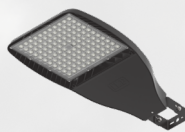
**SLPF**

Adjustable Slip Fitter



**HTM**

Horizontal Tenon Mount

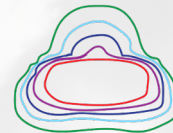


**TRN**

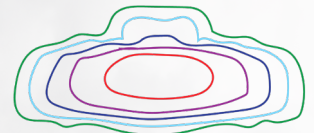
Trunnion Mount

## OPTIC ROTATION & PATTERNS

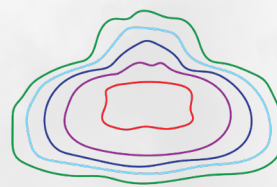
The Skyline Area Light luminaire boasts a wide variety of high-performance photometric distributions, providing superior site illumination in a variety of outdoor applications. The highly configurable, rotatable optics accommodate endless designs to enhance both aesthetics and safety - allowing unparalleled uniformity and desired foot candle levels across the site.



**FTA**



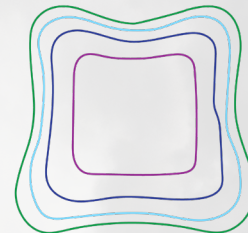
**T2**



**T3**

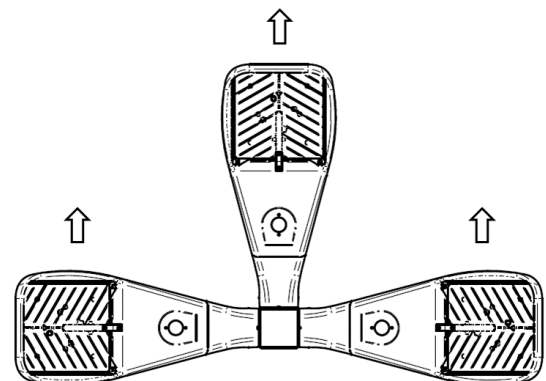


**T4**



**T5S**

## FULLY CUSTOMIZABLE, ROTATABLE OPTICS



Use Type R  
(Optics Rotated Right)

Use Type L  
(Optics Rotated Left)

